
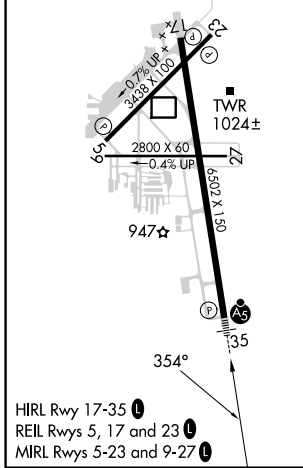
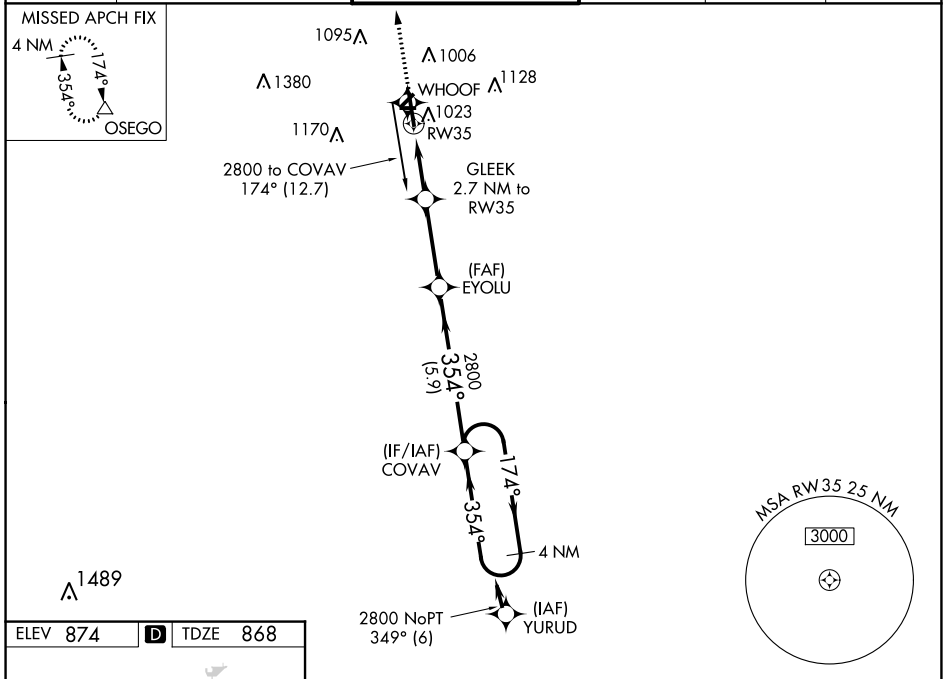


WAAS CH 61102 W35A	APP CRS 354°	Rwy Idg 6502 TDZE 868 Apt Elev 874
----------------------------------------	------------------------	---------------------------------------------------------------

RNAV (GPS) RWY 35

KALAMAZOO/BATTLE CREEK INTL (AZO)

RNP APCH.		KALAMAZOO TOWER ★ 118.3 (CTAF) 0 257.875		GND CON 121.9	CLNC DEL 121.75	UNICOM 122.95
<p>▼ For uncompensated Baro-VNAV systems, LNAV/VNAV NA below -19°C or above 54°C. Circling Rwy 5, 9, 17, 23, 27 NA at night. **RVR 1800 authorized with use of FD or AP or HUD to DA.</p>		<p>MALSRL</p> 		<p>MISSED APPROACH: Climb to 3000 direct OSEGO and hold.</p>		
ATIS 127.25	GREAT LAKES APP CON ★ 121.2 239.25					



3000	OSEGO	4 NM Holding Pattern	
* LNAV only.		GLEEK 2.7 NM to RW35	COVAV
*1.1 NM to RW35		*1780	2800
1.1		1.6 NM	3.2 NM
CATEGORY		A	B
LPV DA **		1068/24	200 (200-½)
LNAV/VNAV DA		1264/35	396 (400-¾)
LNAV MDA	1280/24	412 (500-½)	1280/40 412 (500-¾)
CIRCLING	1380-1	506 (600-1)	1480-1¾ 606 (700-1¾) 1480-2 606 (700-2)

EC-1, 26 DEC 2024 to 23 JAN 2025

EC-1, 26 DEC 2024 to 23 JAN 2025