

ALPENA, MICHIGAN

HI-ILS or LOC RWY 1

LOC I-APN 109.7	APCH CRS 007°	Rwy Idg TDZE Arprt Elev 9001 685 690
---------------------------	-------------------------	--

AL-718 [USAF]

ALPENA COUNTY RGNL (KAPN)

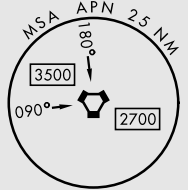
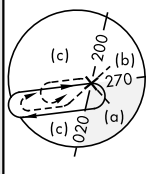
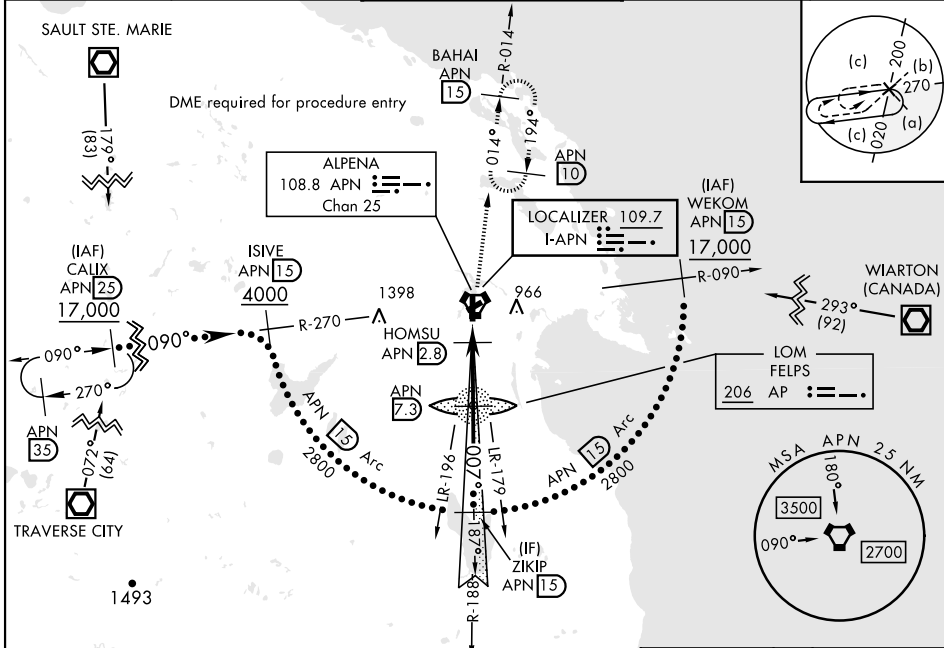
DME required.

- * When ALS inop, increase vis to 3/4 mile.
- ** When ALS inop, increase vis to 1 1/2 miles.



MISSED APPROACH: Climb to 1300, then climbing right turn to 5000 on APN VORTAC R-014 to BAHAI/15 DME and hold. Continue climb-in-hold to 5000.

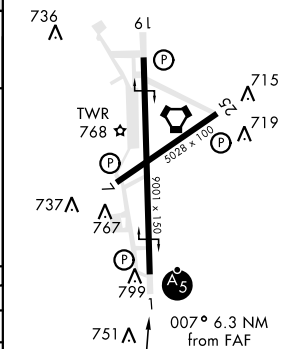
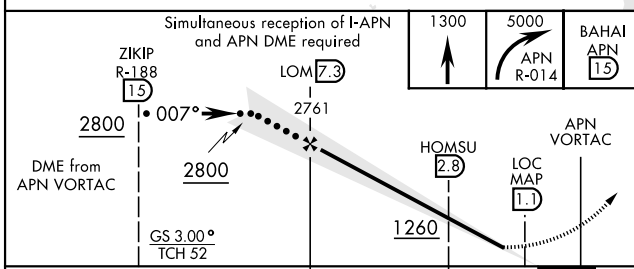
ATIS ★ 120.675 327.05	ALPENA APP CON 128.425 379.3	ALPENA TOWER ★ 121.35 (CTAF) 0 318.1	GND CON 121.9 275.8	UNICOM 122.95
---------------------------------	--	--	-------------------------------	-------------------------



EC-1, 26 DEC 2024 to 23 JAN 2025

EC-1, 26 DEC 2024 to 23 JAN 2025

ELEV 690	TDZE 685
HIRL Rwy 1-19	MIRL Rwy 7-25
REIL Rwy 7, 25, and 19	



CATEGORY	C	D	E		
S-ILS 1*	885-1/2	200	(200-1/2)		
S-LOC 1**	1140-7/8	455	(500-7/8)		
CIRCLING	1220-1 1/2	1280-2	1320-2 1/4		
	530 (600-1 1/2)	590 (600-2)	630 (700-2 1/4)		
FAF to MAP 6.3 NM					
Knots	120	140	160	180	200
Min:Sec	3:09	2:42	2:22	2:06	1:53

ALPENA, MICHIGAN
Amdt 5D 13AUG20

45°05'N-83°34'W

ALPENA COUNTY RGNL (KAPN)

HI-ILS or LOC RWY 1