

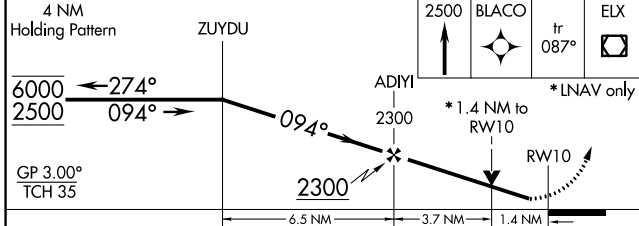
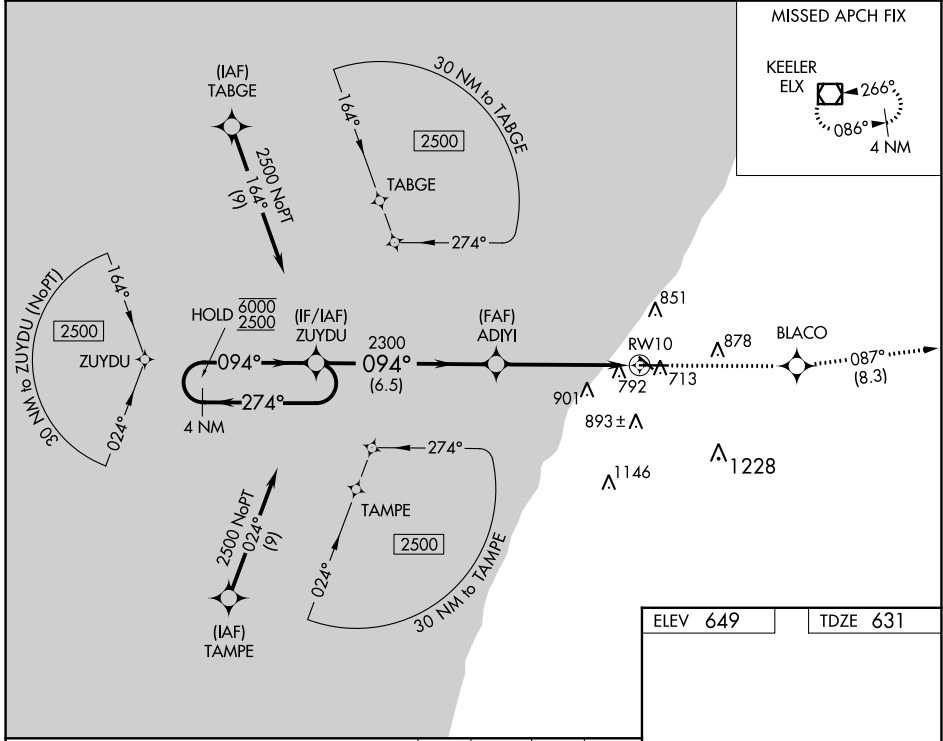
WAAS CH 86912 W10A	APP CRS 094°	Rwy Idg TDZE Apt Elev	6006 631 649
--	------------------------	-----------------------------	---

RNAV (GPS) RWY 10

SOUTHWEST MICHIGAN RGNL (BEH)

RNP APCH.		MISSED APPROACH: Climb to 2500 direct BLACO and on track 087° to ELX VOR/DME and hold.	
<p>▼ Rwy 10 helicopter visibility reduction below ¾ SM NA. ▲ For uncompensated Baro-VNAV systems, LNAV/VNAV NA below -20°C or above 54°C.</p>			

ASOS 121.55	SOUTH BEND APP CON* 118.55 257.8	SOUTH BEND CLNC DEL 119.7	UNICOM 123.0 (CTAF)
-----------------------	--	-------------------------------------	-------------------------------



ELEV 649	TDZE 631
----------	----------

This diagram shows the detailed approach segment for RWY 10. It includes the 0.4% UP slope, the 3205 X 350 and 6006 X 100 dimensions, and the 28' dimension. The heading for the approach is 094°, and the heading for the missed approach is 087°. The diagram also shows the 087° heading for the missed approach and the 087° heading for the missed approach.

REIL Rwy 10, 14 and 32
MIRL Rwy 14-32
HIRL Rwy 10-28

EC-1, 26 DEC 2024 to 23 JAN 2025

EC-1, 26 DEC 2024 to 23 JAN 2025