

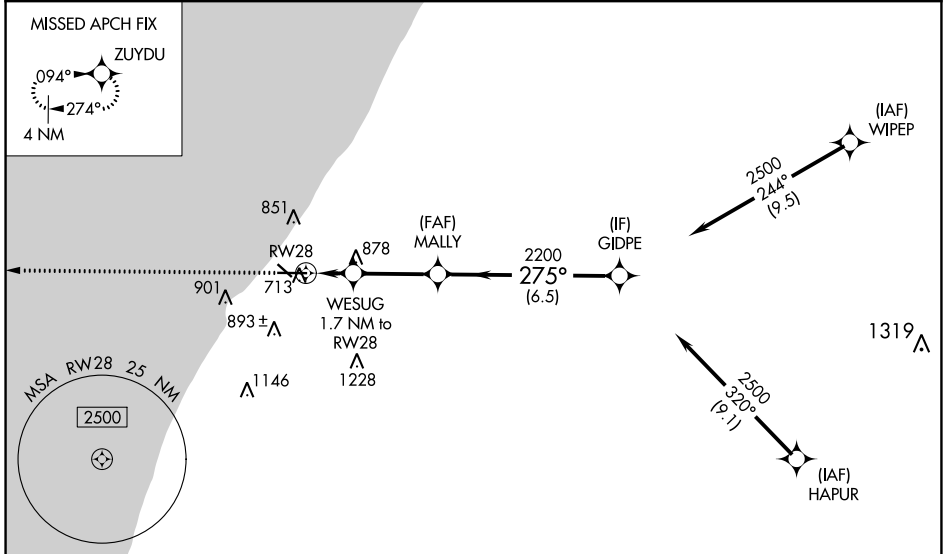
WAAS CH <b>45822</b> W28A	APP CRS <b>275°</b>	Rwy ldg TDZE Apt Elev	<b>6006</b> <b>649</b> <b>649</b>
---------------------------------	------------------------	-----------------------------	---

# RNAV (GPS) RWY 28

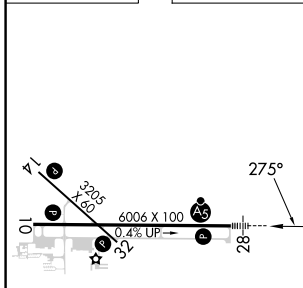
SOUTHWEST MICHIGAN RGNL (BEH)

<p>RNP APCH.</p> <p>▼</p> <p>For uncompensated Baro-VNAV systems, LNAV/VNAV NA below -19°C (-2°F) or above 39°C (102°F). Circling Rwy 14, 32 NA at night.</p>		<p>MALSRL</p>	<p>MISSED APPROACH: Climb to 2500 direct ZUYDU and hold.</p>
---	--	---------------	--

ASOS <b>121.55</b>	SOUTH BEND APP CON* <b>118.55 257.8</b>	SOUTH BEND CLNC DEL <b>119.7</b>	UNICOM <b>123.0 (CTAF) 0</b>
-----------------------	--	-------------------------------------	---------------------------------



ELEV 649	TDZE 649
----------	----------



2500	ZUYDU	GIDPE	
*LNAV only		WESUG 1.7 NM to RW28	MALLY 2200
RW28		1220*	2200
CATEGORY		A	B
LPV DA	DA	849-1/2	200 (200-1/2)
LNAV/VNAV DA	DA	941-1/2	292 (300-1/2)
LNAV MDA	MDA	1140-1/2	491 (500-1)
CIRCLING	CIRCLING	1140-1 491 (500-1)	1300-1 3/4 651 (700-1 3/4)
		1160-1 511 (600-1)	1340-2 691 (700-2)

REIL Rwy 10, 14 and 32 0  
MIRL Rwy 14-32 0  
HIRL Rwy 10-28 0

EC-1, 26 DEC 2024 to 23 JAN 2025

EC-1, 26 DEC 2024 to 23 JAN 2025