

MAYPORT, FLORIDA

# COPTER RNAV (GPS) RWY 23

WAAS CH <b>45485</b> W23B	APCH CRS <b>229°</b>	Rwy ldg TDZE Arprt Elev	<b>8001</b> <b>15</b> <b>15</b>
---------------------------------	-------------------------	-------------------------------	---------------------------------------

-(USN)

MAYPORT NS (ADM DAVID L MC DONALD FLD) (KNRB)

RNP APCH

RADAR required

⚠ \* LPV and LNAV/VNAV procedures are authorized only when the St. Johns River is clear of vessels from the mouth of Haulover Creek to St. Johns Point. ATC will advise aircraft on final approach if a conflict is present and coordinate a missed approach as required. Does not apply to practice approaches in VMC.

MISSSED APPROACH: Climb to 600 then climbing left turn to 1500 direct to CONWY and hold.

ATIS * <b>236.775</b>	JACKSONVILLE APP CON/DEP CON <b>124.9 308.4</b>	TOWER * <b>118.75 239.3</b>	GND CON <b>126.5 233.7</b>	ASR/PAR
--------------------------	--	--------------------------------	-------------------------------	---------

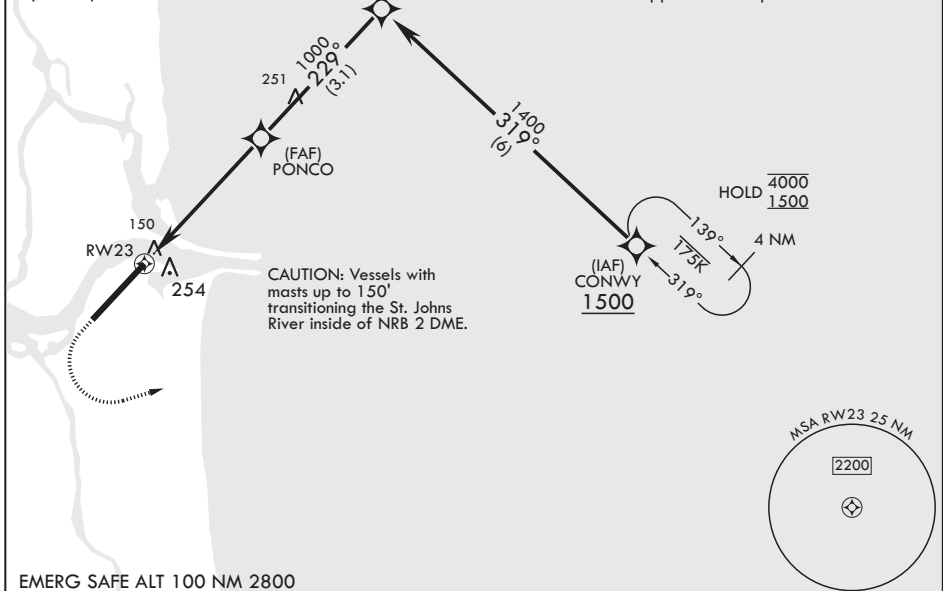
For uncompensated Baro-VNAV systems, LNAV/VNAN NA below -15°C or above 54°C.

Max airspeed 90 KIAS.

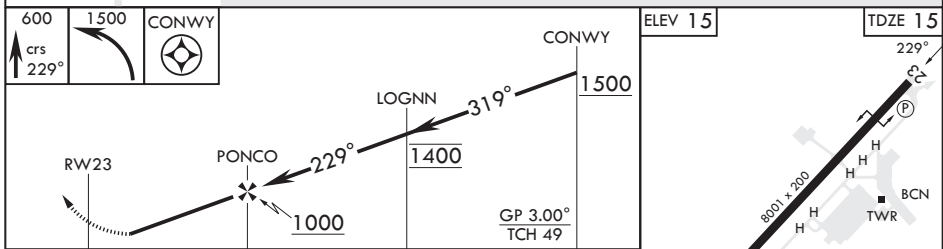
Visibility Reduction by Helicopters NA.

(IF)  
LOGN N  
1400

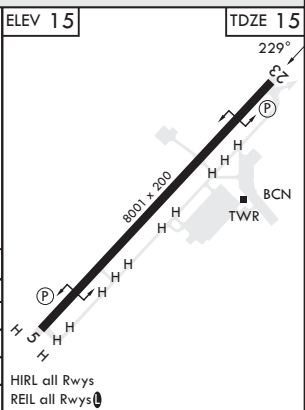
This approach is not authorized at night when the VGSI is inop, unless the St. Johns River is clear of vessels from the mouth of Haulover Creek to St. Johns Point. ATC will advise aircraft on final approach if a conflict is present and coordinate a missed approach as required.



EMERG SAFE ALT 100 NM 2800



CATEGORY	COPTER	
LPV DA*	319-1	304 (400-1)
LNAV/VNAV DA*	385-1	370 (400-1)
LNAV MDA	520-1	505 (600-1)
CIRCLING	560-1	545 (600-1)



MAYPORT, FLORIDA

30°23'N - 81°25'W MAYPORT NS (ADM DAVID L MC DONALD FLD) (KNRB)

Amdt 1 05SEP24

# COPTER RNAV (GPS) RWY 23

SE-3, 26 DEC 2024 to 23 JAN 2025

SE-3, 26 DEC 2024 to 23 JAN 2025