

COPTER TACAN Z RWY 23

TACAN Chan 51	NRB	APCH CRS 221°	Rwy Ldg TDZE Arprt Elev 8001 15 15
-------------------------	-----	-------------------------	--

[USN]

MAYPORT NS (ADM DAVID L. MC DONALD FLD) (KNRB)

▼ Visibility reduction by helicopters NA.

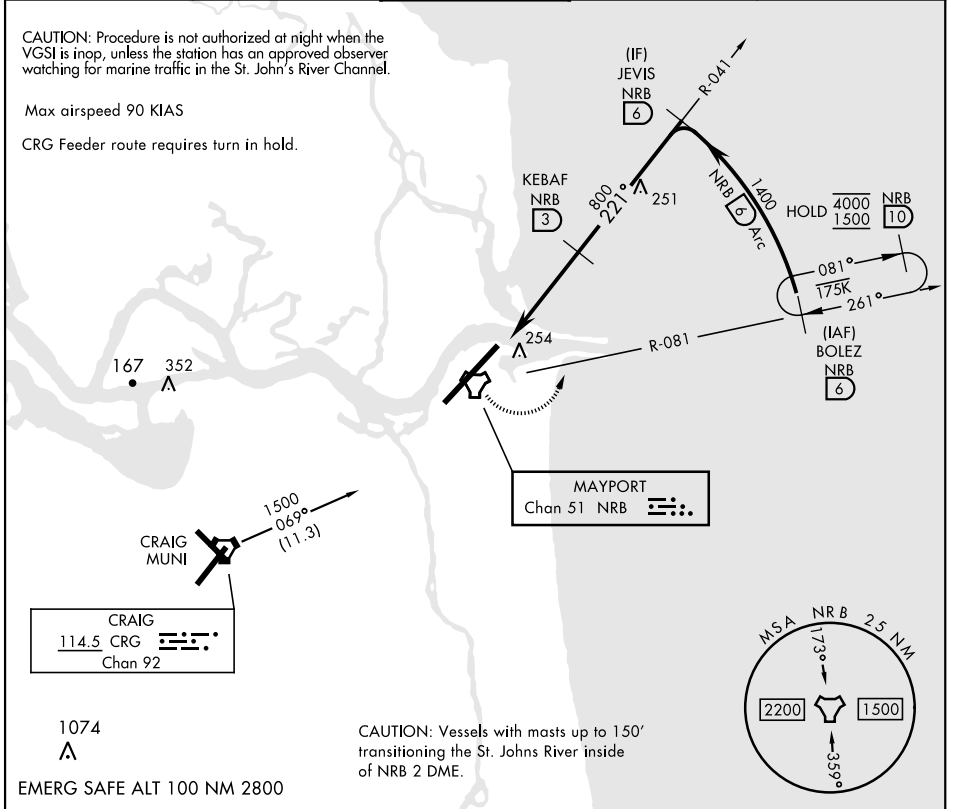
MISSED APPROACH: Climbing left turn to 1500 via NRB TACAN R-081 to BOLEZ and hold.

ATIS ★ 236.775	JACKSONVILLE APP CON 124.9 308.4	TOWER ★ 118.75 239.30	GND CON 126.5 233.7	ASR/PAR
--------------------------	--	---------------------------------	-------------------------------	---------

CAUTION: Procedure is not authorized at night when the VGSI is inop, unless the station has an approved observer watching for marine traffic in the St. John's River Channel.

Max airspeed 90 KIAS

CRG Feeder route requires turn in hold.



SE-3, 26 DEC 2024 to 23 JAN 2025

SE-3, 26 DEC 2024 to 23 JAN 2025

1500 NRB R-081	BOLEZ NRB (6)	JEVIS NRB (6)	BOLEZ NRB (6)
NRB TACAN	LEBAF NRB (1)	KEBAF NRB (3)	1500
CATEGORY	COPTER		
S-23	520-1	505	(600-1)
CIRCLING	560-1	545	(600-1)

ELEV	15	TDZE	15
REIL Rwy 5-23	HIRL Rwy 5-23		

COPTER TACAN Z RWY 23