

TACAN Y RWY 23

TACAN NRB Chan 51	APCH CRS 221°	Rwy Ldg TDZE 8001 15 Arpt Elev 15
-----------------------------	-------------------------	---

[USN]

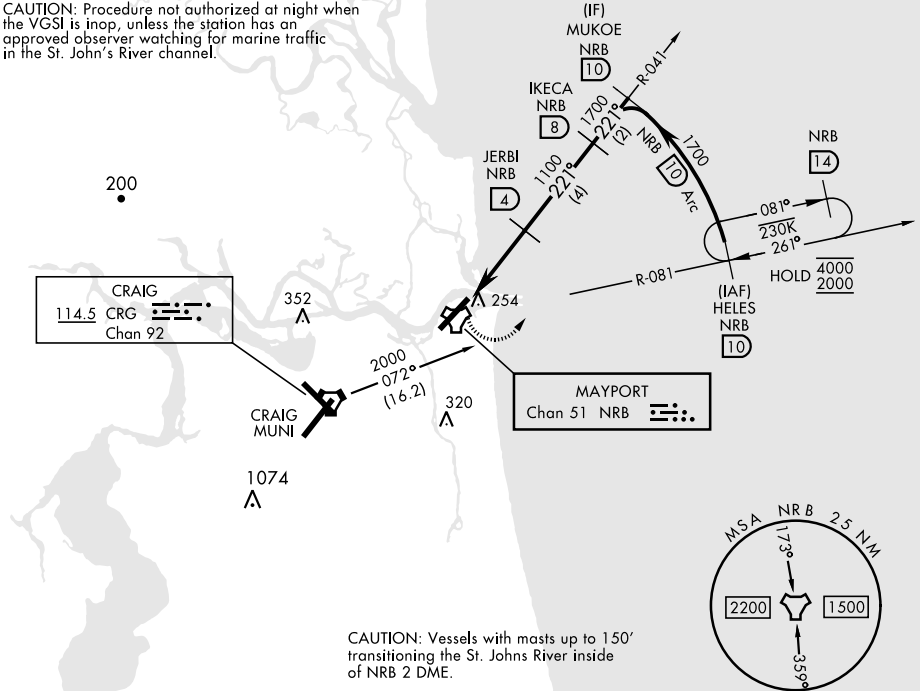
MAYPORT NS (ADM DAVID L. MC DONALD FLD) (KNRB)

<p>▼ Visibility reduction by helicopters NA.</p>	<p>MISSED APPROACH: Climbing left turn to 2000 via NRB TACAN R-081 to HELES and hold.</p>
--	---

<p>ATIS ★ 236.775</p>	<p>JACKSONVILLE APP CON 124.9 308.4</p>	<p>TOWER ★ 118.75 239.30</p>	<p>GND CON 126.5 233.7</p>	<p>ASR/PAR</p>
----------------------------------	--	---	---------------------------------------	----------------

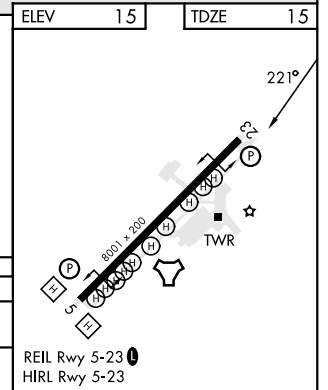
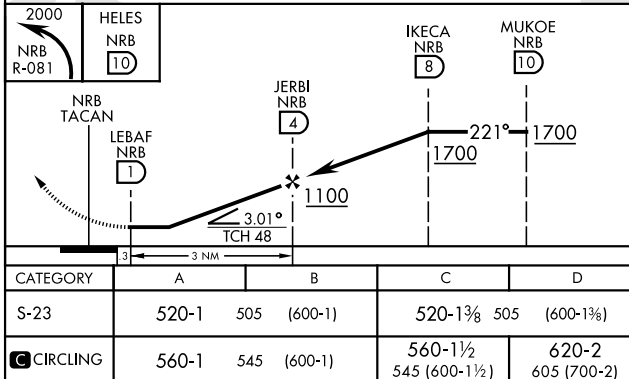
CRG feeder route requires turn in hold.

CAUTION: Procedure not authorized at night when the VGSI is inop, unless the station has an approved observer watching for marine traffic in the St. John's River channel.



CAUTION: Vessels with masts up to 150' transiting the St. Johns River inside of NRB 2 DME.

EMERG SAFE ALT 100 NM 2800



TACAN Y RWY 23

SE-3, 26 DEC 2024 to 23 JAN 2025

SE-3, 26 DEC 2024 to 23 JAN 2025