

# TACAN Y RWY 5

TACAN NRB Chan 51	APCH CRS 055°	Rwy Ldg 8001	TDZE 12	Arpt Elev 15
----------------------	------------------	-----------------	------------	-----------------

[USN] MAYPORT NS (ADM DAVID L. MC DONALD FLD) (KNRB)

**MISSED APPROACH:** Climb to 500. Then climbing right turn to 3000 via NRB TACAN R-081 to BENGÉ and hold, continue climb in hold to 3000.

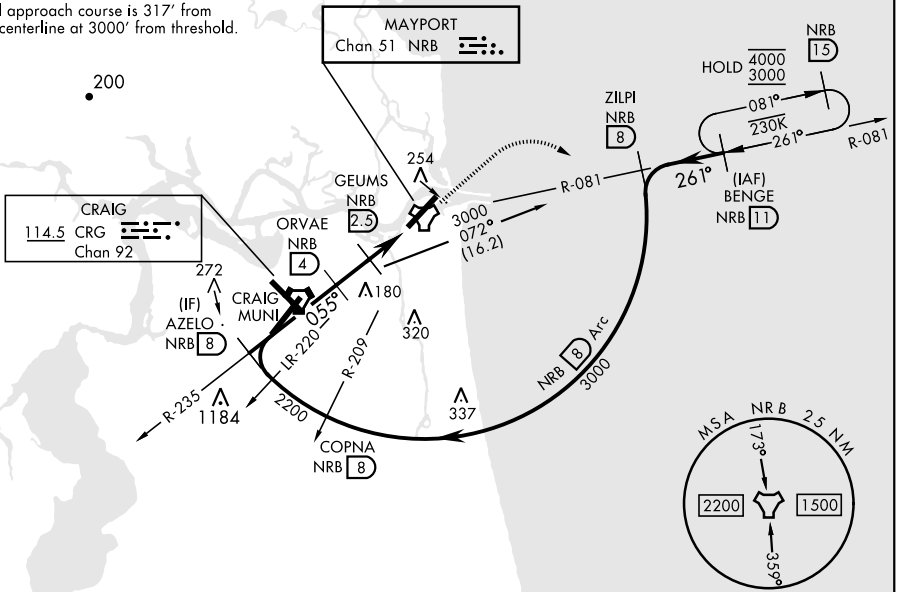
ATIS ★ 236.775	JACKSONVILLE APP CON 124.9 308.4	TOWER ★ 118.75 239.30	GND CON 126.5 233.7	ASR/PAR
-------------------	-------------------------------------	--------------------------	------------------------	---------

CAUTION: Circling not authorized to Rwy 23 at night when VGS1 inop on Rwy 23, unless the station has an approved observer watching for marine traffic in the St. John's River channel.

CAUTION: Intmed seg len 4 NM.

CRG feeder requires turn in hold.

Final approach course is 317' from rwy centerline at 3000' from threshold.

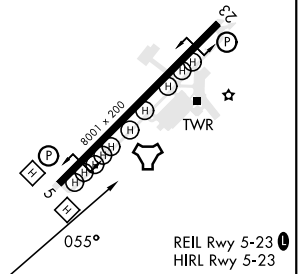


SE-3, 26 DEC 2024 to 23 JAN 2025

SE-3, 26 DEC 2024 to 23 JAN 2025

EMERG SAFE ALT 100 NM 2800

				ELEV 15	TDZE 12
	AZELO NRB (8)	ORVAE NRB (4)	GEUMS NRB (2.5)	NRB TACAN	BENGÉ R-081 (11)
	2200	1200	660	3000	500
		055°	3.16°		
			TCH 48		
		1.5 NM	1.5 NM	4	
CATEGORY	A	B	C	D	
S-5	440-1	428 (500-1)	440-1½	428 (500-1½)	
CIRCLING	560-1	545 (600-1)	560-1½	620-2	
		545 (600-1½)	605 (700-2)		



# TACAN Y RWY 5