

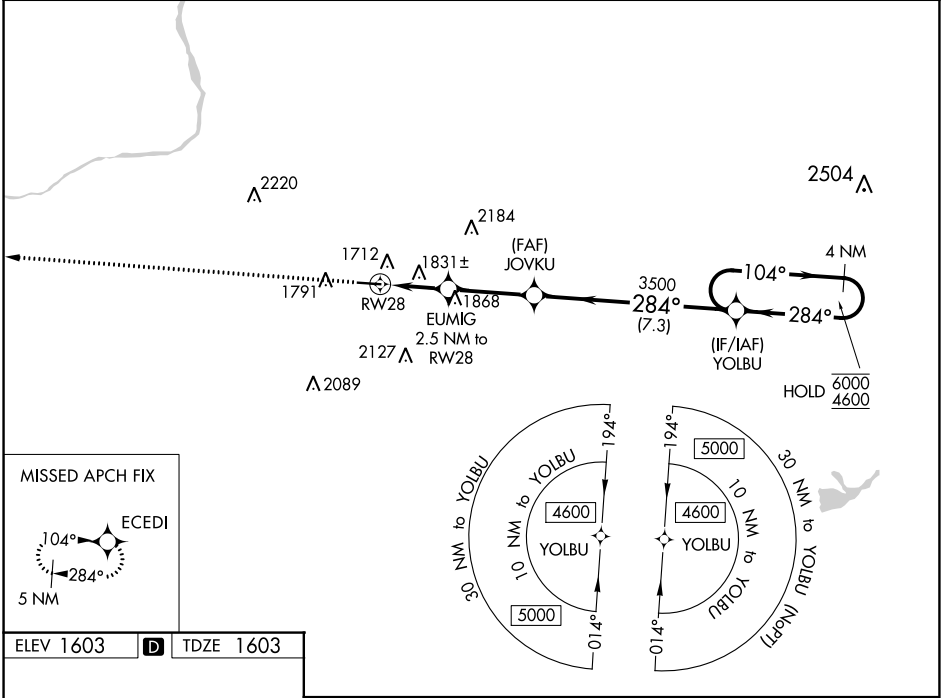
WAAS CH <b>50140</b> <b>W28A</b>	APP CRS <b>284°</b>	Rwy Idg TDZE Apt Elev	<b>4898</b> <b>1603</b> <b>1603</b>
--	------------------------	-----------------------------	---

# RNAV (GPS) RWY 28

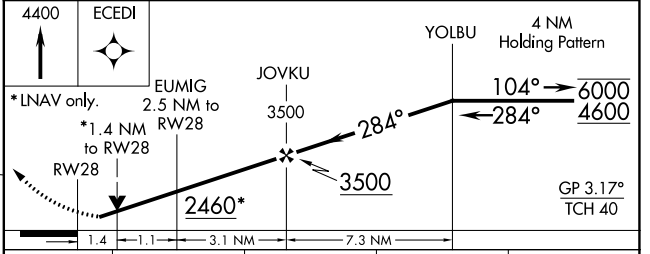
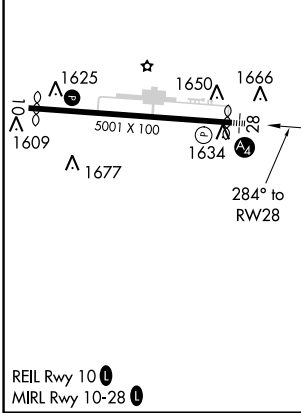
HAZLETON RGNL (HZL)

RNP APCH.	MALS =	MISSED APPROACH: Climb to 4400 direct ECEDI and hold.
<p><b>▼</b> Rwy 28 helicopter visibility reduction below 3/4 SM NA. Inop table does not apply to LPV all Cats and LNAV Cats A/B. For uncompensated Baro-VNAV systems, LNAV/VNAV NA below -18°C or above 54°C.</p>		

AWOS-3 <b>119.975</b>	WILKES-BARRE APP CON <b>126.3 256.7</b>	CLNC DEL <b>121.7</b>	UNICOM <b>123.0 (CTAF) 0</b>
--------------------------	--	--------------------------	---------------------------------



ELEV 1603	<b>D</b>	TDZE 1603
-----------	----------	-----------



CATEGORY	A	B	C	D
LPV DA	1978-1		375 (400-1)	
LNAV/VNAV DA	2143-1 1/4		540 (600-1 1/4)	
LNAV MDA	2100-1	497 (500-1)	2100-1 1/8	497 (500-1 1/8)
<b>C</b> CIRCLING	2140-1 537 (600-1)	2400-1 797 (800-1)	2480-2 1/2 877 (900-2 1/2)	2520-3 917 (1000-3)

NE-4, 26 DEC 2024 to 23 JAN 2025

NE-4, 26 DEC 2024 to 23 JAN 2025