

WAAS CH 82105 W18A	APP CRS 176°	Rwy Idg 5150 TDZE 720 Apt Elev 720
--	------------------------	---

RNAV (GPS) RWY 18

OKMULGEE RGNL/PAUL AND BETTY ABBOTT FLD (OKM)

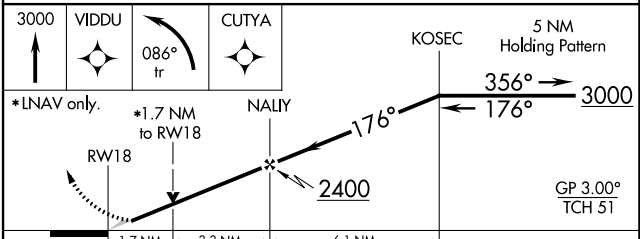
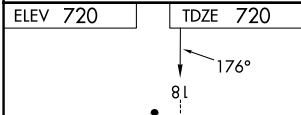
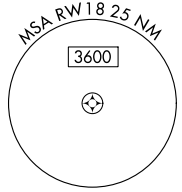
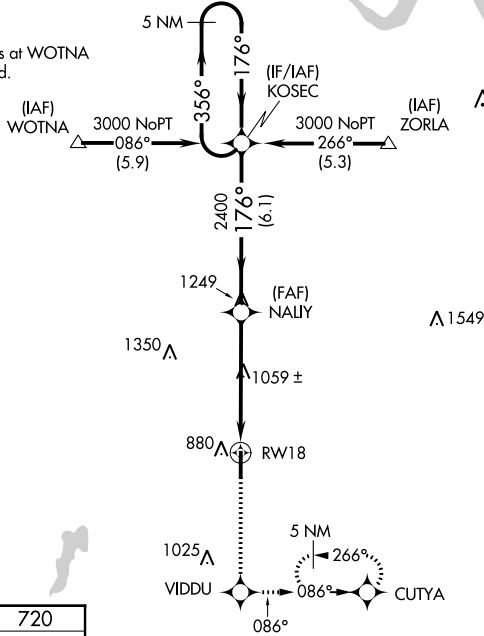
⚠ When local altimeter setting not received, use Tulsa Intl altimeter setting: Increase LPV DA to 1050 feet; increase all MDAs 80 feet and visibility Cat C ¼ SM. DME/DME RNP-0.3 NA. VDP NA with Tulsa Intl altimeter setting.



MISSED APPROACH: Climb to 3000 direct VIDDU and left turn via 086° track to CUTYA and hold, continue climb-in-hold to 3000.

AWOS-3PT 118.225	TULSA APP CON 119.85 338.3	UNICOM 123.0 (CTAF) 0
----------------------------	--------------------------------------	---------------------------------

Procedure NA for arrivals at WOTNA on V532 northwest bound.



CATEGORY	A	B	C	D		
LPV DA	970-½			250 (300-½)	NA	
LNAV MDA	1320-½		600 (600-½)	1320-1	600 (600-1)	NA
C CIRCLING	1320-1	1340-1	1340-1¾	620 (700-1¼)	NA	

SC-1, 26 DEC 2024 to 23 JAN 2025

SC-1, 26 DEC 2024 to 23 JAN 2025