

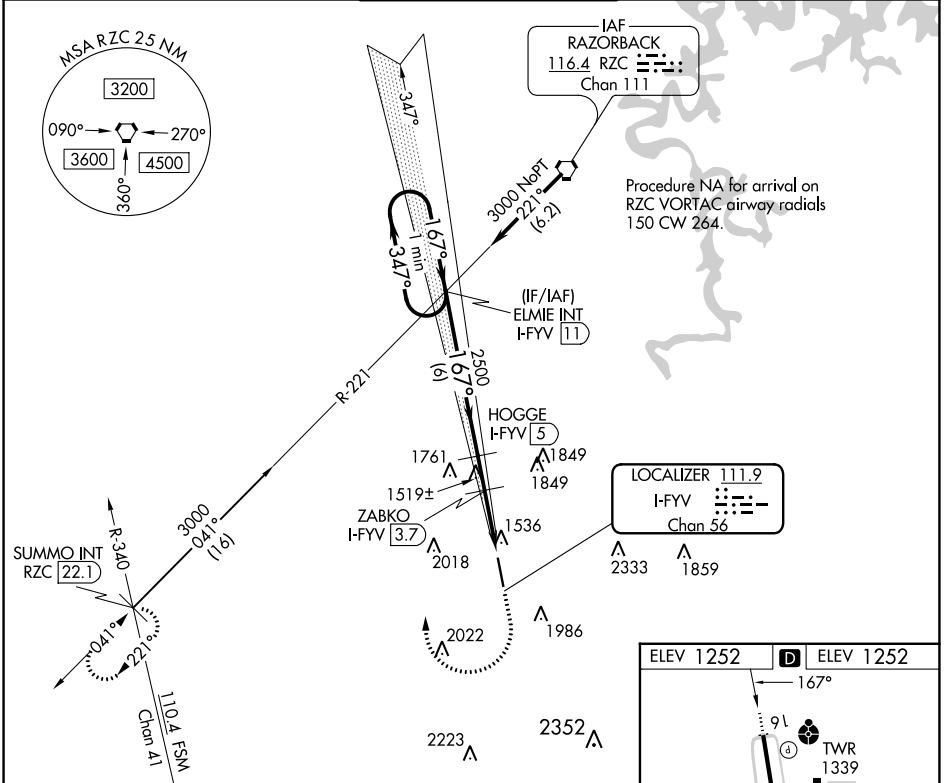
LOC/DME I-FYV <b>111.9</b> Chan <b>56</b>	APP CRS <b>167°</b>	Rwy Idg TDZE <b>1252</b> Apt Elev <b>1252</b>
---	------------------------	---

# LOC RWY 16

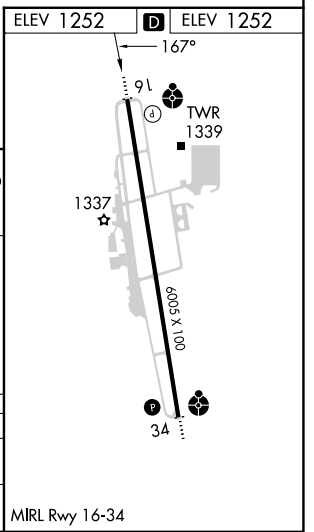
DRAKE FLD (FYV)

<b>⚠</b> Circling NA east of Rwy 16-34. Rwy 16 helicopter visibility reduction below 3/4 SM NA. DME required.	<b>ODALS</b> 	<b>MISSED APPROACH:</b> Climb to 2100 then climbing right turn to 4000 on heading 295° and RZC VORTAC R-221 to SUMMO INT/RZC 22.1 DME and hold.
---	------------------	---

<b>ATIS</b> <b>119.575</b>	<b>RAZORBACK APP CON*</b> <b>121.0 244.575</b>	<b>DRAKE TOWER*</b> <b>128.0 (CTAF) 371.9</b>	<b>GND CON</b> <b>121.8</b>	<b>UNICOM</b> <b>122.95</b>
-------------------------------	---	--	--------------------------------	--------------------------------



One Minute Holding Pattern	<b>ELMIE INT I-FYV 11</b>	<b>HOGGE I-FYV 5</b>	<b>ZABKO I-FYV 3.7</b>	<b>I-FYV 2.7</b>	<b>I-FYV 1.2</b>
3000	347°	167°	167°	3.00° TCH 50	2080
2100	4000	RZC R-221	SUMMO INT		
↑	hdg 295°				
6 NM	1.3 NM	1	1.5		
CATEGORY	A	B	C	D	
S-LOC 16	1780-3/4	528 (600-3/4)	1780-13/8	528 (600-13/8)	
<b>C</b> CIRCLING	2000-1	748 (800-1)	2320-3 1068 (1100-3)	2340-3 1088 (1100-3)	



SC-1, 26 DEC 2024 to 23 JAN 2025

SC-1, 26 DEC 2024 to 23 JAN 2025