

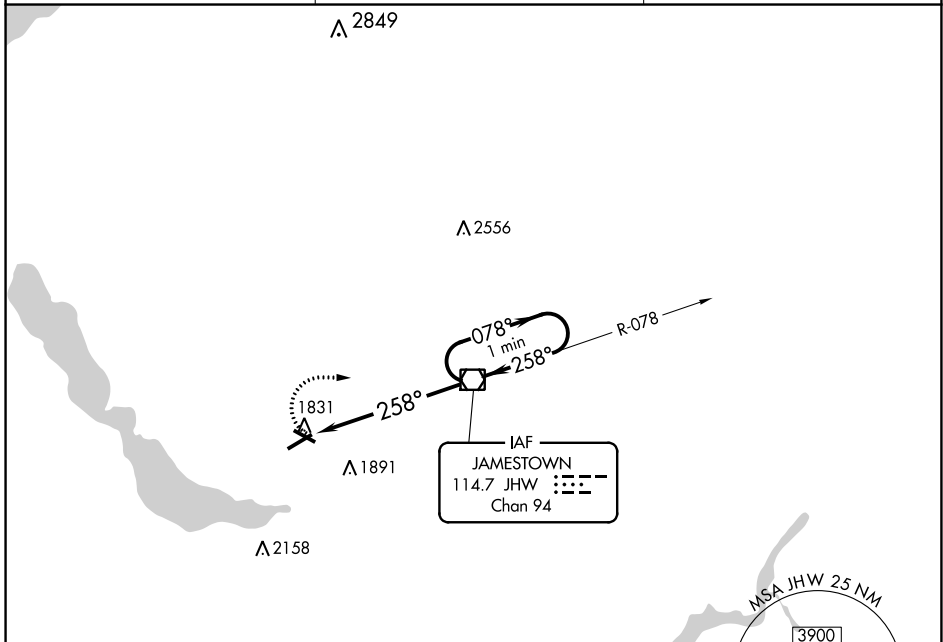
VOR/DME JHW 114.7 Chan 94	APP CRS 258°	Rwy Idg TDZE 1721 Apt Elev 1723	5300
---	------------------------	---	-------------

VOR RWY 25

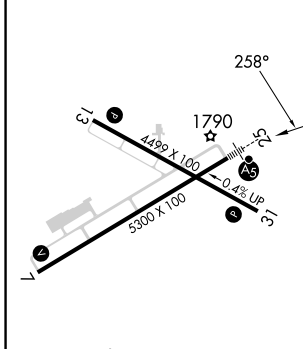
CHAUTAUQUA COUNTY/JAMESTOWN (JHW)

<p>▼ Inoperative table does not apply. Circling to Rwy 13/31 NA at night.</p>	<p>MALSR</p>	<p>MISSED APPROACH: Climbing right turn to 3700 direct JHW VOR/DME and hold.</p>

AWOS-3PT 118.425	BUFFALO APP CON * 126.05	UNICOM 122.975 (CTAF) 1
----------------------------	------------------------------------	-----------------------------------



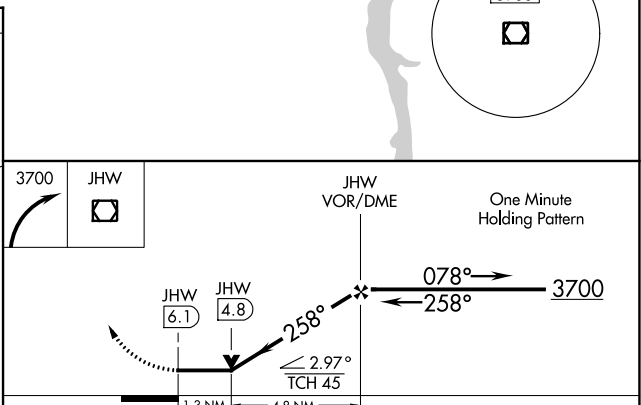
ELEV 1723	D	TDZE 1721
-----------	----------	-----------



REIL Rwy 31 **1**
MIRL Rwy 13-31 **1**
HIRL Rwy 7-25 **1**

FAF to MAP 6.1 NM

Knots	60	90	120	150	180
Min:Sec	6:06	4:04	3:03	2:26	2:02



CATEGORY	A	B	C	D
S-25	2180-1	459 (500-1)	2180-1¼ 459 (500-1¼)	2180-1½ 459 (500-1½)
C CIRCLING	2200-1	477 (500-1)	2260-1½ 537 (600-1½)	2340-2 617 (700-2)

NE-2, 26 DEC 2024 to 23 JAN 2025

NE-2, 26 DEC 2024 to 23 JAN 2025