

RNAV (GPS) RWY 23

WAAS Chan 92556 W23A	APCH CRS 233°	Rwy Idg TDZE 24 Arprt Elev 26	5125
--	-------------------------	---	-------------

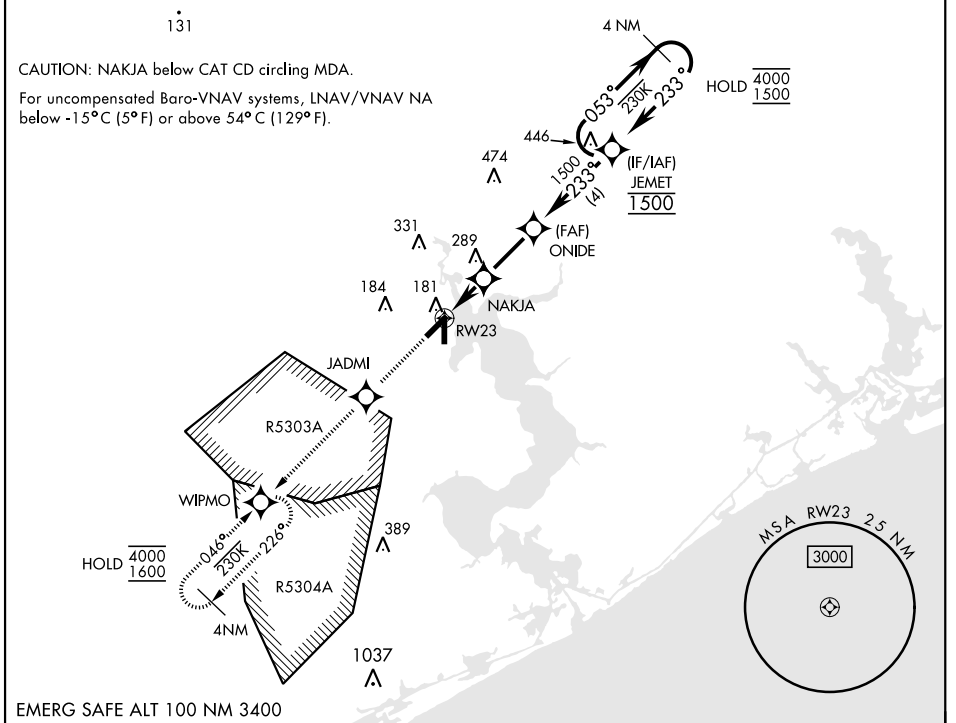
[USN]

NEW RIVER MCAS (MC CUTCHEON FLD) (KNCA)

RNP APCH
RADAR required

MISSED APPROACH: Climb to 1600 direct JADMI, track 233° to WIPMO and hold.

ATIS ★ 288.325	CHERRY POINT APP CON 119.35 377.175	TOWER ★ 134.95(CTAF) 0★ 360.2	GND CON 121.8 254.275	CLNC DEL 269.25	ASR/PAR
--------------------------	---	---	---------------------------------	---------------------------	---------



EMERG SAFE ALT 100 NM 3400

1600 ↑	JADMI	WIPMO	VGSIs and descent angles not coincident (VGSIs Angle 3.00/TCH 37)		ELEV 26	TDZE 24
CATEGORY	A	B	C	D		
LPV DA	224- ³ / ₄		200	(200- ³ / ₄)		
LNAV/VNAV DA	312- ⁷ / ₈ 288 (300- ⁷ / ₈)	323- ⁷ / ₈ 299 (300- ⁷ / ₈)	331- ⁷ / ₈ 307 (400- ⁷ / ₈)	342- ⁷ / ₈ 318 (400- ⁷ / ₈)		
LNAV MDA	440-1	416 (500-1)	440-1 ¹ / ₈	416 (500-1 ¹ / ₈)		
CIRCLING	500-1	474 (500-1)	700-2 674 (700-2)	700-2 ¹ / ₄ 674 (700-2 ¹ / ₄)	HIRL all rwys ①	

RNAV (GPS) RWY 23

SE-2, 26 DEC 2024 to 23 JAN 2025

SE-2, 26 DEC 2024 to 23 JAN 2025