

JACKSONVILLE, NORTH CAROLINA

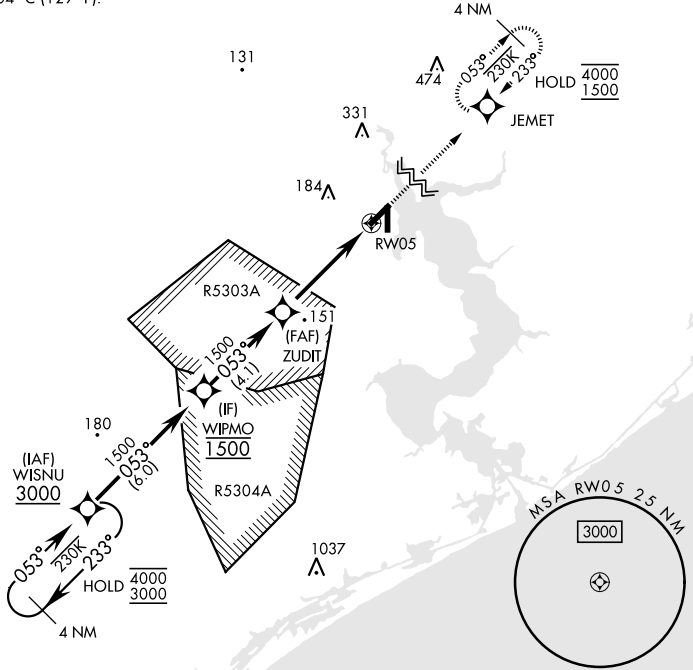
RNAV (GPS) RWY 5

WAAS Chan 77243 W05A	APCH CRS 053°	Rwy Idg TDZE 26 Arpt Elev 26	5125	[USN]	NEW RIVER MCAS (MC CUTCHEON FLD) (KNCA)
--	-------------------------	--	------	-------	---

RNP APCH	MISSED APPROACH: Climb to 1500 direct JEMET and hold.
RADAR required	

ATIS ★ 288.325	CHERRY POINT APP CON 119.35 377.175	TOWER ★ 134.95(CTAF) 0★ 360.2	GND CON 121.8 254.275	CLNC DEL 269.25	ASR/PAR
--------------------------	---	---	---------------------------------	---------------------------	---------

For uncompensated Baro-VNAV systems, LNAV/VNAV NA below -15°C (5°F) or above 54°C (129°F).



EMERG SAFE ALT 100 NM 3400

WISNU	VGSI and descent angles not coincident (VGSI Angle 3.00/TCH 37)		1500	JEMET	ELEV 26	TDZE 26
GP 3.00° TCH 50	053°	1500	1500	1.2 NM to RW05	177 A	181
						TWR
						5125 A 150
						2689 x 150
						1
						A2
						053°
						HIRL all Rwy 0

JACKSONVILLE, NORTH CAROLINA

34°43'N-77°26'W

NEW RIVER MCAS (MC CUTCHEON FLD) (KNCA)

Amdt 8 28DEC23

RNAV (GPS) RWY 5

SE-2, 26 DEC 2024 to 23 JAN 2025

SE-2, 26 DEC 2024 to 23 JAN 2025