

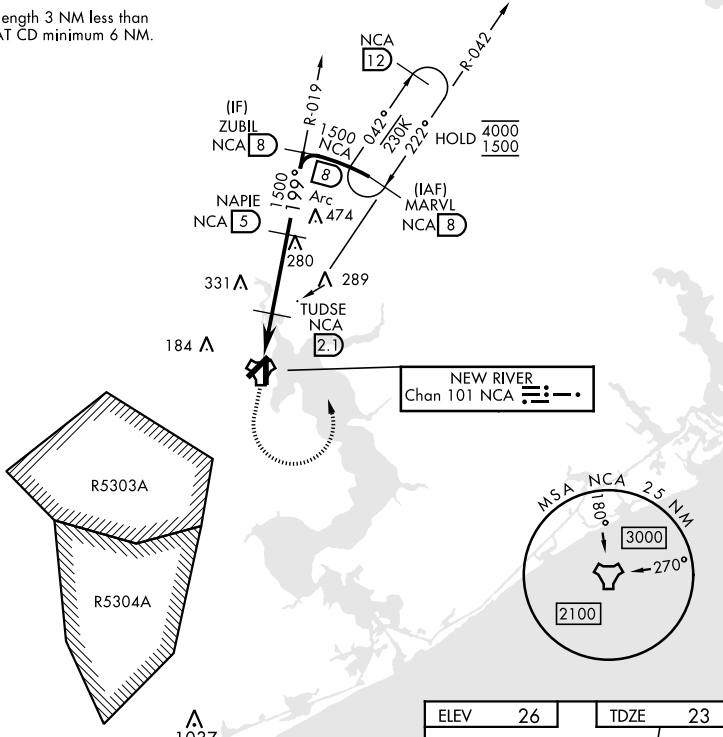
TACAN RWY 19

TACAN NCA Chan 101	APCH CRS 199°	Rwy Idg 4789 TDZE 23 Arpt Elev 26	[USN] NEW RIVER MCAS (MC CUTCHEON FLD)(KNCA)
-----------------------	------------------	--	--

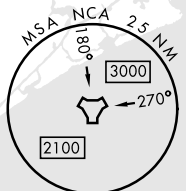
RADAR required		MISSED APPROACH: Climbing left turn to 1500 intercept NCA R-042 direct MARVL (R-042/8 DME) and hold.			
ATIS ★ 288.325	CHERRY POINT APP CON 119.35 377.175	TOWER ★ 134.95(CTAF) 0★ 360.2	GND CON 121.8 254.275	CLNC DEL 269.25	ASR/PAR

135

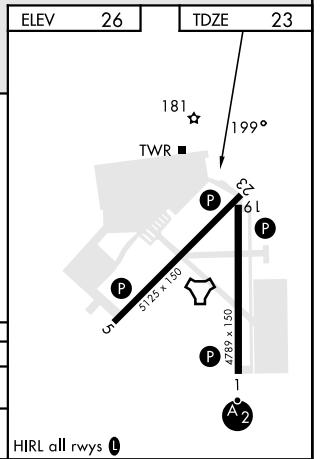
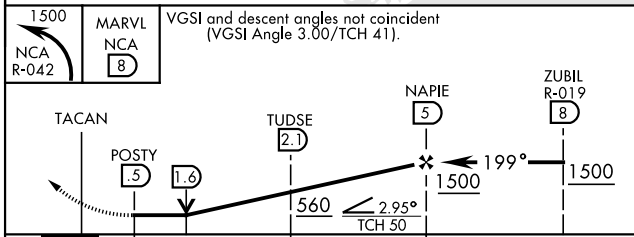
CAUTION: Intmd segment length 3 NM less than CAT AB minimum 5 NM; CAT CD minimum 6 NM.



NEW RIVER
Chan 101 NCA



EMERG SAFE ALT 100 NM 3400



CATEGORY	A		B		C		D	
S-19	440-1	417	(500-1)		440-1 1/8	417	(500-1 1/8)	
C CIRCLING	500-1	474	(500-1)		700-2	674	(700-2)	700-2 1/4
					674	(700-2)		674

HIRL all rwy 0

TACAN RWY 19

SE-2, 26 DEC 2024 to 23 JAN 2025

SE-2, 26 DEC 2024 to 23 JAN 2025