

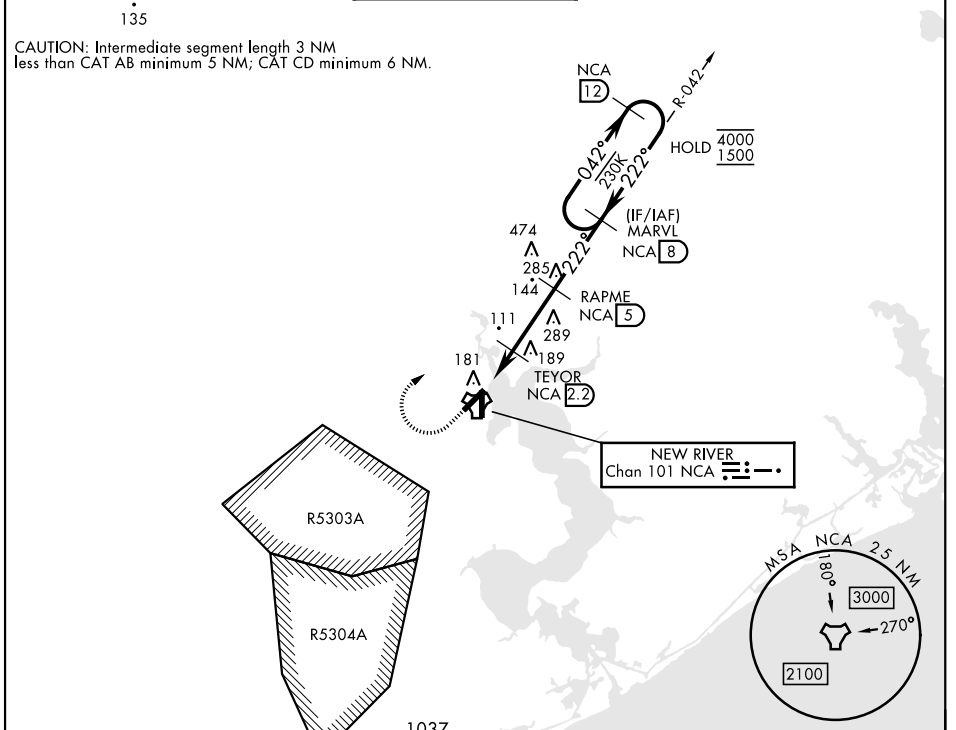
# TACAN RWY 23

TACAN NCA Chan <b>101</b>	APCH CRS <b>222°</b>	Rwy ldg TDZE Arprt Elev	<b>5125</b> <b>24</b> <b>26</b>	[USN]	NEW RIVER MCAS (MC CUTCHEON FLD)(KNCA)
------------------------------	-------------------------	-------------------------------	---------------------------------------	-------	--

RADAR required

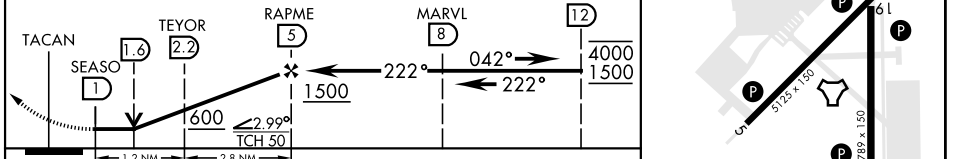
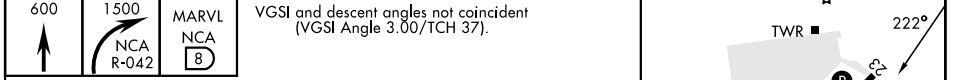
MISSED APPROACH: Climb to 600 then climbing right turn to 1500, intercept NCA TACAN R-042 to MARVL and hold.

ATIS ★ <b>288.325</b>	CHERRY POINT APP CON <b>119.35 377.175</b>	TOWER ★ <b>134.95(CTAF) 0★ 360.2</b>	GND CON <b>121.8 254.275</b>	CLNC DEL <b>269.25</b>	ASR/PAR
--------------------------	---	---	---------------------------------	---------------------------	---------



ELEV	26	TDZE	24
------	----	------	----

EMERG SAFE ALT 100 NM 3400



CATEGORY	A		B	C		D
S-23	440-1	416	(500-1)	440-1 1/8	416	(500-1 1/8)
CIRCLING	500-1	474	(500-1)	700-2 674 (700-2)	700-2 1/4 674 (700-2 1/4)	

HIRL all Rwy's 1

# TACAN RWY 23

SE-2, 26 DEC 2024 to 23 JAN 2025

SE-2, 26 DEC 2024 to 23 JAN 2025