

TACAN RWY 5

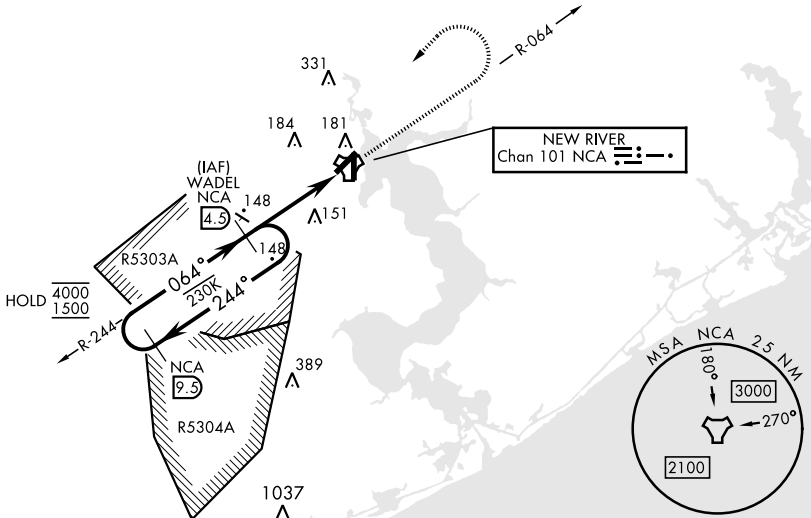
TACAN NCA Chan 101	APCH CRS 064°	Rwy Idg TDZE Arprt Elev 5125 26 26	[USN] NEW RIVER MCAS (MC CUTCHEON FLD)(KNCA)
------------------------------	-------------------------	--	--

RADAR required

MISSED APPROACH: Climbing left turn to 1500 via NCA TACAN R-064, then left turn direct WADEL and hold.

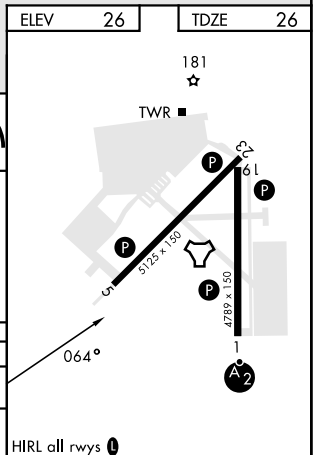
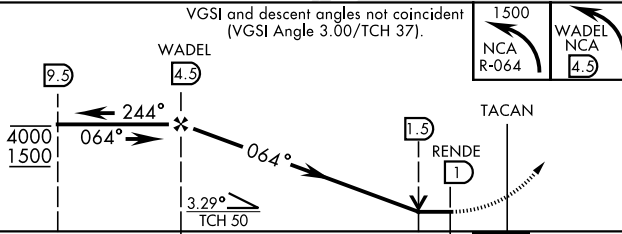
ATIS ★ 288.325	CHERRY POINT APP CON 119.35 377.175	TOWER ★ 134.95 (CTAF) 0★ 360.2	GND CON 121.8 254.275	CLNC DEL 269.25	ASR/PAR
--------------------------	---	---	---------------------------------	---------------------------	---------

135°



EMERG SAFE ALT 100 NM 3400

VGSI and descent angles not coincident (VGSI Angle 3.00/TCH 37).



CATEGORY	A	B	C	D
S-5	420-1 394 (400-1)		420-1 1/8 394 (400-1 1/8)	
C CIRCLING	500-1 474 (500-1)		700-2 674 (700-2)	700-2 1/4 674 (700-2 1/4)

HIRL all rwys

TACAN RWY 5

SE-2, 26 DEC 2024 to 23 JAN 2025

SE-2, 26 DEC 2024 to 23 JAN 2025