

# TACAN RWY 18

TACAN HRT Chan <b>45</b>	APCH CRS <b>180°</b>	Rwy Idg TDZE Arprt Elev <b>9600</b> <b>35</b> <b>38</b>
-----------------------------	-------------------------	--

[USAF]

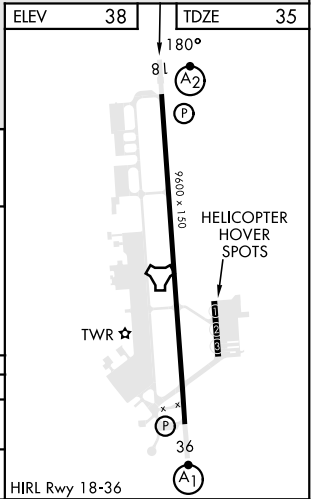
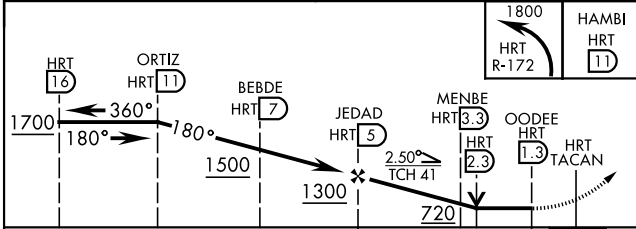
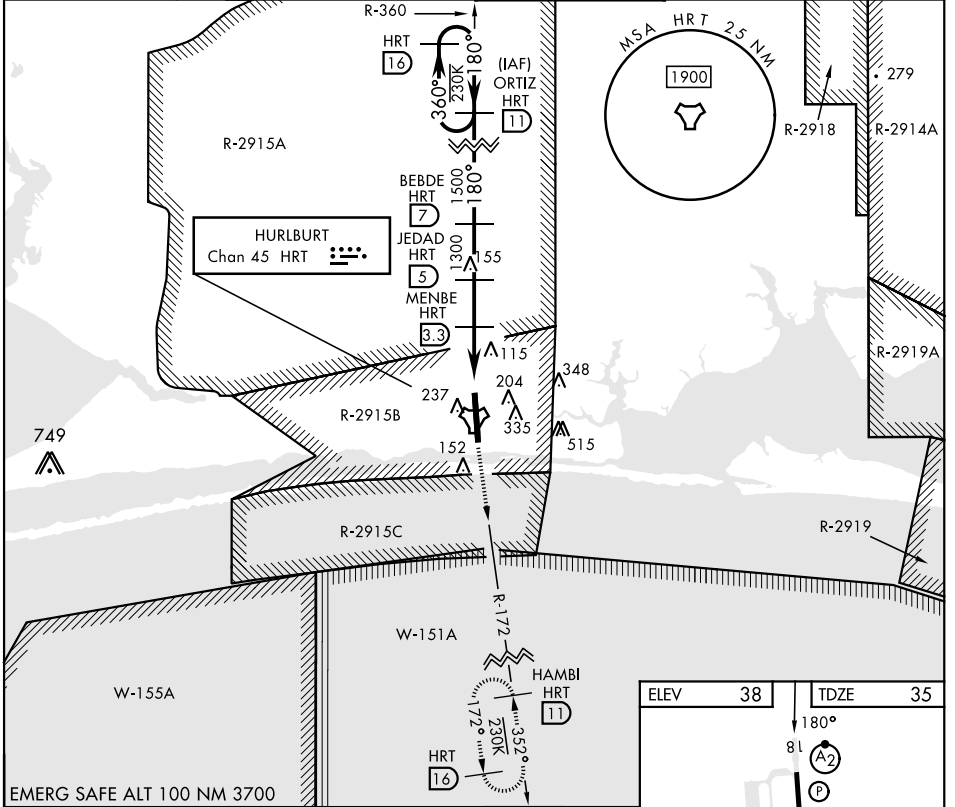
HURLBURT FLD (KHRT)


▼ \* When ALS inop, increase CAT AB vis to 1 mile, CAT CD vis to 1¼ miles, and CAT E vis to 1½ miles.

SALSF 

MISSED APPROACH: Climb to 1800 on R-172 to HAMB/11 DME and hold.

ATIS <b>134.475 360.675</b>	EGLIN APP CON <b>125.1 281.45</b> <b>132.1 360.6</b>	(271° - 089°) (090° - 270°)	TOWER <b>126.5 351.675</b>	GND CON <b>123.975 275.8</b>
--------------------------------	--	--------------------------------	-------------------------------	---------------------------------



CATEGORY	A	B	C	D	E
S-18 *	460-¾	425 (500-¾)	460-1	425 (500-1)	460-1¼ 425 (500-1¼)
 CIRCLING	640-1	602 (700-1)	640-1¾ 602 (700-1¾)	640-2 602 (700-2)	880-3 842 (900-3)

# TACAN RWY 18

SE-3, 26 DEC 2024 to 23 JAN 2025

SE-3, 26 DEC 2024 to 23 JAN 2025