


LOC I-ONP 111.5	APP CRS 162°	Rwy Idg 5398
		TDZE 152
		Apt Elev 160

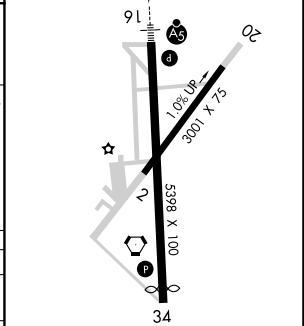
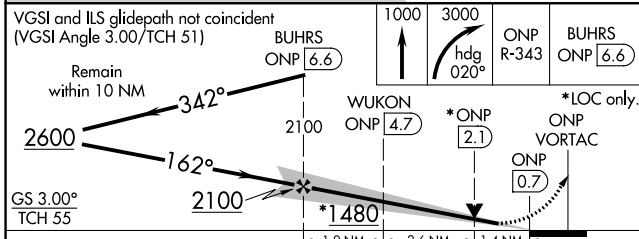
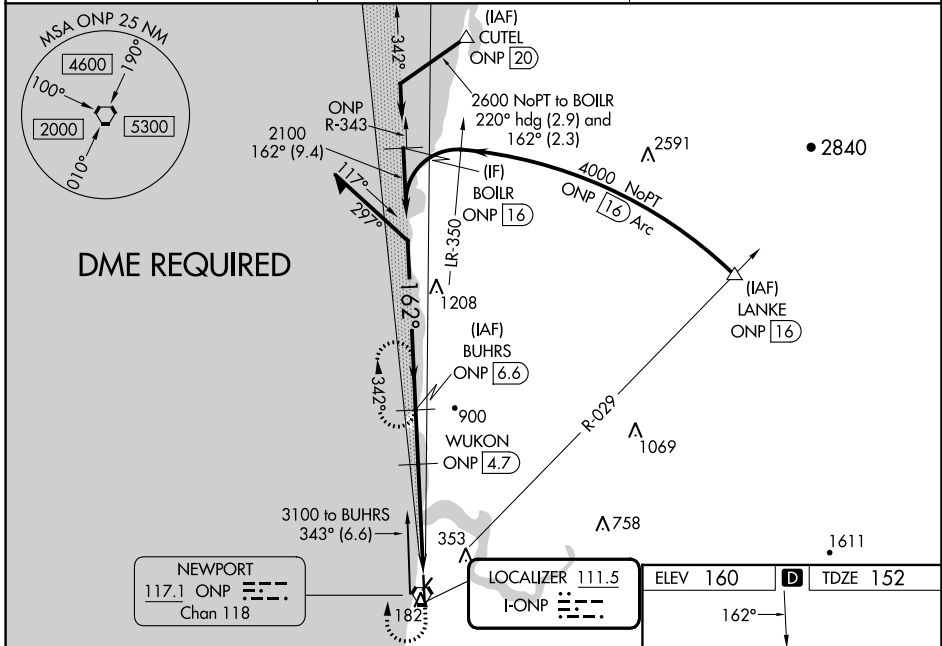
ILS or LOC RWY 16

NEWPORT MUNI (ONP)

▽ Inop table does not apply to S-ILS Rwy 16, all Cats. DME required. VDP NA when using Tillamook altimeter setting. Rwy 16 helicopter visibility reduction below 3/4 SM NA. **△ NA** When local altimeter setting not received, use Tillamook altimeter setting; increase DA to 537 feet and all MDA 140 feet; increase S-LOC 16 Cat C/D visibility 3/8 mile and increase Circling Cat B visibility 1/4 mile. For inop MALSRS, increase S-LOC 16 Cat A/B visibility to 1 mile and Cat C/D visibility to 1 3/8 mile. For inop MALSRS when using Tillamook altimeter setting, increase S-ILS 16 all Cats visibility to 1 1/4 mile and increase S-LOC 16 Cat A/B visibility to 1 mile. DME from ONP VORTAC. Simultaneous reception of I-ONP and ONP DME required.

MALSRS

MISSED APPROACH: Climb to 1000 then climbing right turn to 3000 on heading 020° and on ONP VORTAC R-343 to BUHRS/ONP 6.6 DME and hold, continue climb-in-hold to 3000.

AWOS-3 133.9	SEATTLE CENTER 125.8 291.7	UNICOM 122.8 (CTAF)
------------------------	--------------------------------------	-------------------------------



CATEGORY	A	B	C	D
S-ILS 16	402-3/4 250 (300-3/4)			
S-LOC 16	660-3/4	508 (500-3/4)	660-1	508 (500-1)
C CIRCLING	880-1 720 (800-1)	1000-1 1/4 840 (900-1 1/4)	1400-3 1240 (1300-3)	1600-3 1440 (1500-3)

REIL Rwy 34
 MIRL Rwy 2-20
 HIRL Rwy 16-34

NW-1, 26 DEC 2024 to 23 JAN 2025

NW-1, 26 DEC 2024 to 23 JAN 2025