

PENSACOLA, FLORIDA

# RNAV (GPS) RWY 19

- (USN)

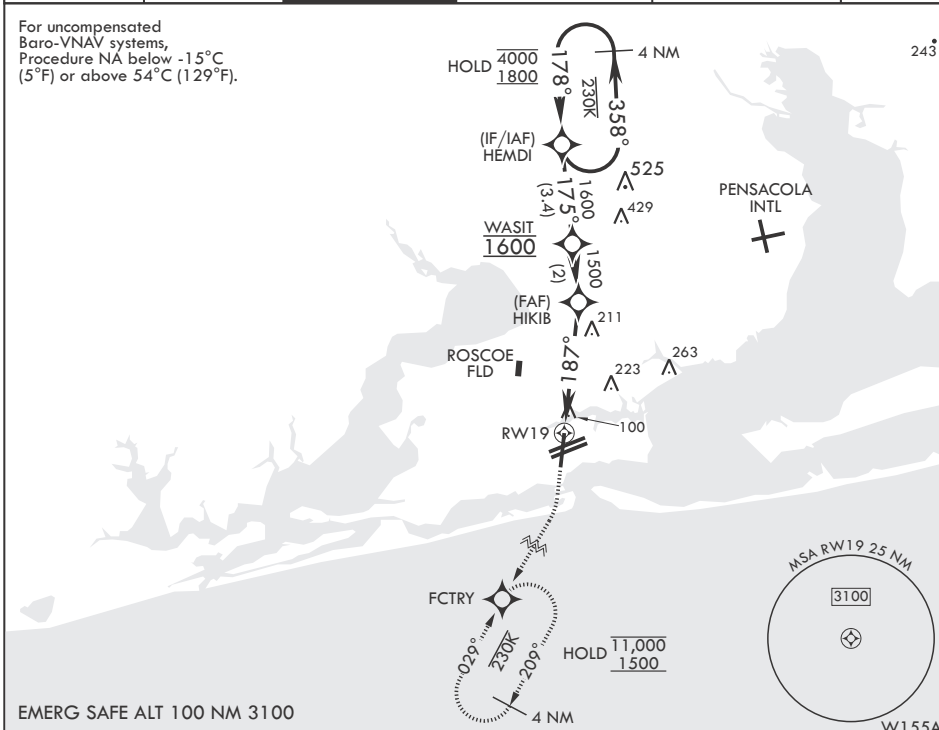
PENSACOLA NAS (FORREST SHERMAN FLD) (KNPA)

APCH CRS <b>187°</b>	Rwy Idg <b>7136</b>
	TDZE <b>22</b>
	Arprt Elev <b>28</b>

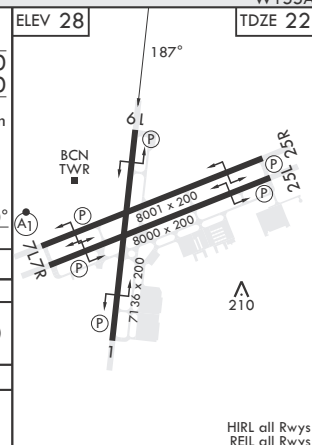
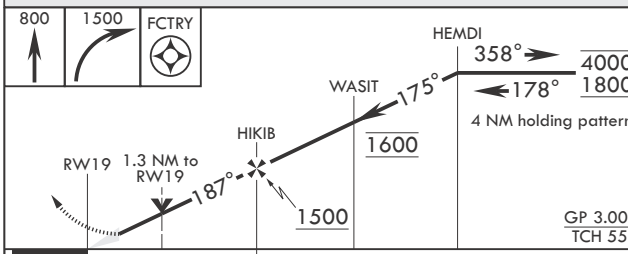
RNP APCH	MISSED APPROACH: Climb to 800 then climbing right turn to 1500 direct FCTRY and hold.
RADAR required	

ATIS <b>124.35 266.8</b>	APP CON <b>120.65 270.8</b>	SHERMAN TOWER <b>120.7 340.2</b>	SHERMAN GND CON <b>121.7 336.4</b>	SHERMAN CLNC DEL <b>134.1 268.7</b>	ASR/PAR
-----------------------------	--------------------------------	-------------------------------------	---------------------------------------	--	---------

For uncompensated Baro-VNAV systems, Procedure NA below -15°C (5°F) or above 54°C (129°F).



EMERG SAFE ALT 100 NM 3100



CATEGORY	A	B	C	D	E
LNAV/VNAV DA	281-¾ 259 (300-¾)	292-⅞ 270 (300-⅞)	300-⅞ 278 (300-⅞)	311-⅞	289 (300-⅞)
LNAV MDA	500-1	478 (500-1)	500-1½	478	(500-1½)
<b>C</b> CIRCLING	520-1	492 (500-1)	540-1½ 512 (600-1½)	580-2	552 (600-2)

PENSACOLA, FLORIDA  
Amdt 5 02DEC21

30°21'N - 87°19'W PENSACOLA NAS (FORREST SHERMAN FLD) (KNPA)

# RNAV (GPS) RWY 19

SE-3, 26 DEC 2024 to 23 JAN 2025

SE-3, 26 DEC 2024 to 23 JAN 2025