

PENSACOLA, FLORIDA

# RNAV (GPS) RWY 25L

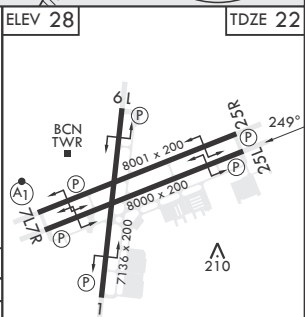
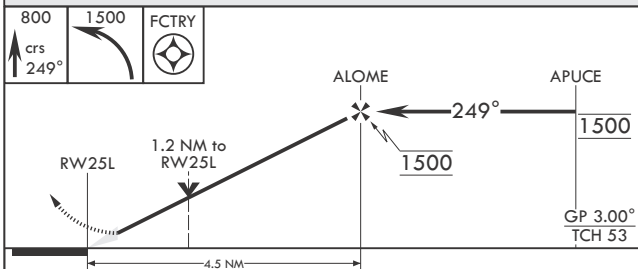
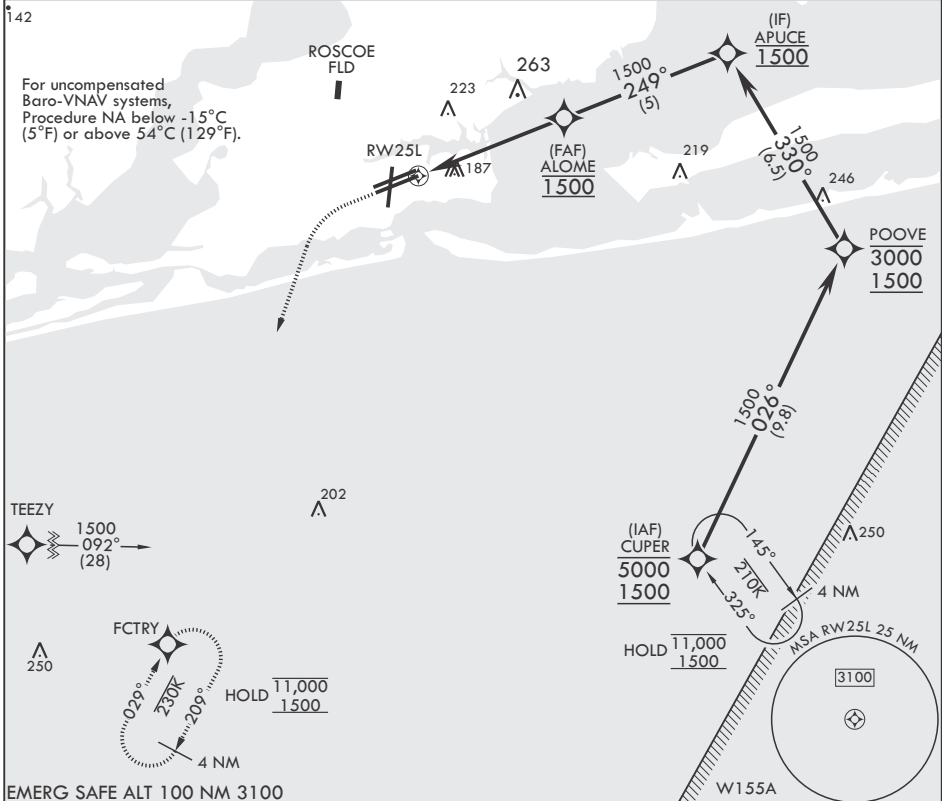
APCH CRS	Rwy Idg	8000
249°	TDZE	22
	Arprt Elev	28

-(USN)

PENSACOLA NAS (FORREST SHERMAN FLD) (KNPA)

RNP APCH	MISSED APPROACH: Climb to 800 then climbing left turn to 1500 direct FCTRY and hold.
----------	--

ATIS	APP CON	SHERMAN TOWER	SHERMAN GND CON	SHERMAN CLNC DEL	ASR/PAR
124.35 266.8	120.65 270.8	120.7 340.2	121.7 336.4	134.1 268.7	



CATEGORY	A		B		C		D	
LNAV/VNAV DA	440-1 1/8		418		(500-1 1/8)		(500-1 1/8)	
LNAV MDA	440-1	418	(500-1)		440-1 1/8	418	(500-1 1/8)	
CIRCLING	520-1	492	(500-1)		540-1 1/2	512	(600-1 1/2)	
					580-2	552	(600-2)	

HIRL all Rwys  
REIL all Rwys

PENSACOLA, FLORIDA

30°21'N - 87°19'W PENSACOLA NAS (FORREST SHERMAN FLD) (KNPA)

Amdt 3 02DEC21

# RNAV (GPS) RWY 25L

SE-3, 26 DEC 2024 to 23 JAN 2025

SE-3, 26 DEC 2024 to 23 JAN 2025