

# TACAN Y RWY 1

TACAN NPA Chan 119	APCH CRS 015°	Rwy Idg 7136
		TDZE 28
		Arprt Elev 28

[USN]

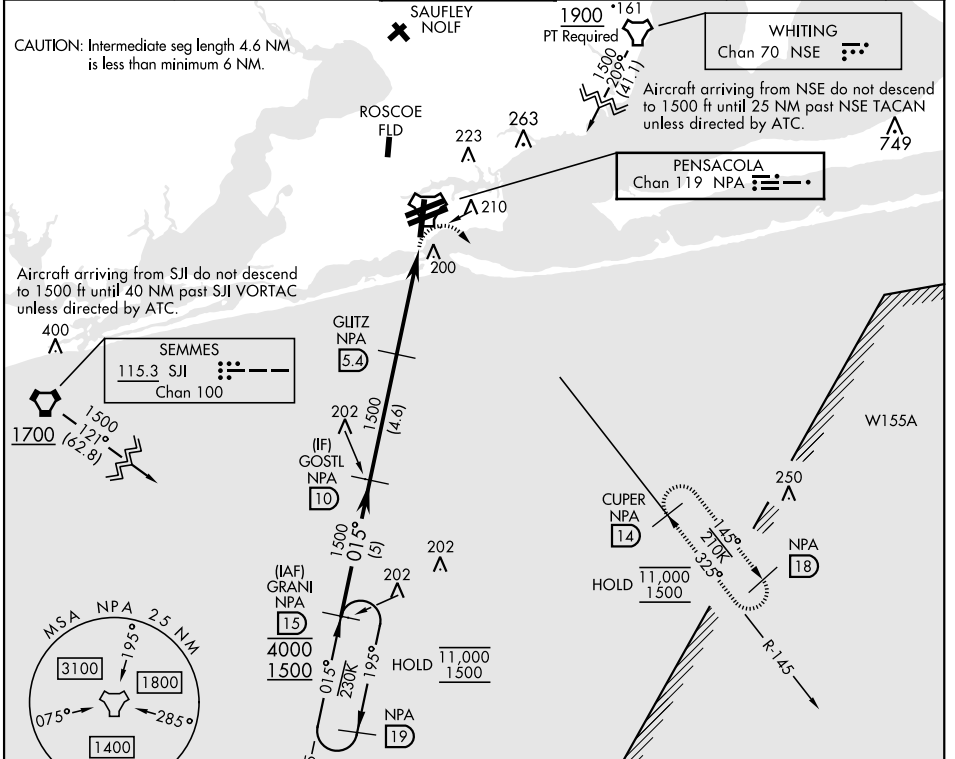
PENSACOLA NAS (FORREST SHERMAN FLD) (KNPA)



MISSED APPROACH: Climbing right turn to 1500 via NPA TACAN R-145 to CUPER and hold.

ATIS 124.35 266.8	APP CON 120.65 270.8	SHERMAN TOWER 120.7 340.2	GND CON 121.7 336.4	CLNC DEL 134.1 268.7	ASR/ PAR
----------------------	-------------------------	------------------------------	------------------------	-------------------------	-------------

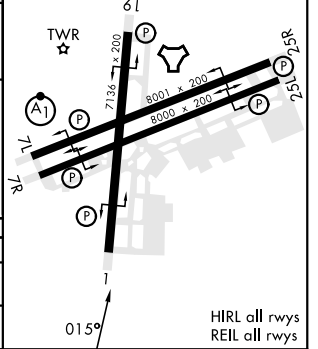
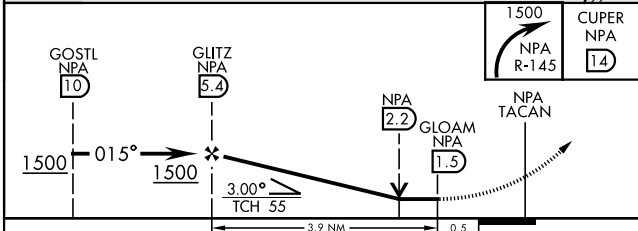
CAUTION: Intermediate seg length 4.6 NM is less than minimum 6 NM.



SE-3, 26 DEC 2024 to 23 JAN 2025

SE-3, 26 DEC 2024 to 23 JAN 2025

ELEV	28	TDZE	28
------	----	------	----



CATEGORY	A	B	C	D	E
S-1	460-1	432 (500-1)	460-1½	432 (500-1½)	
CIRCLING	520-1	492 (500-1)	540-1½ 512 (600-1½)	580-2	552 (600-2)

# TACAN Y RWY 1