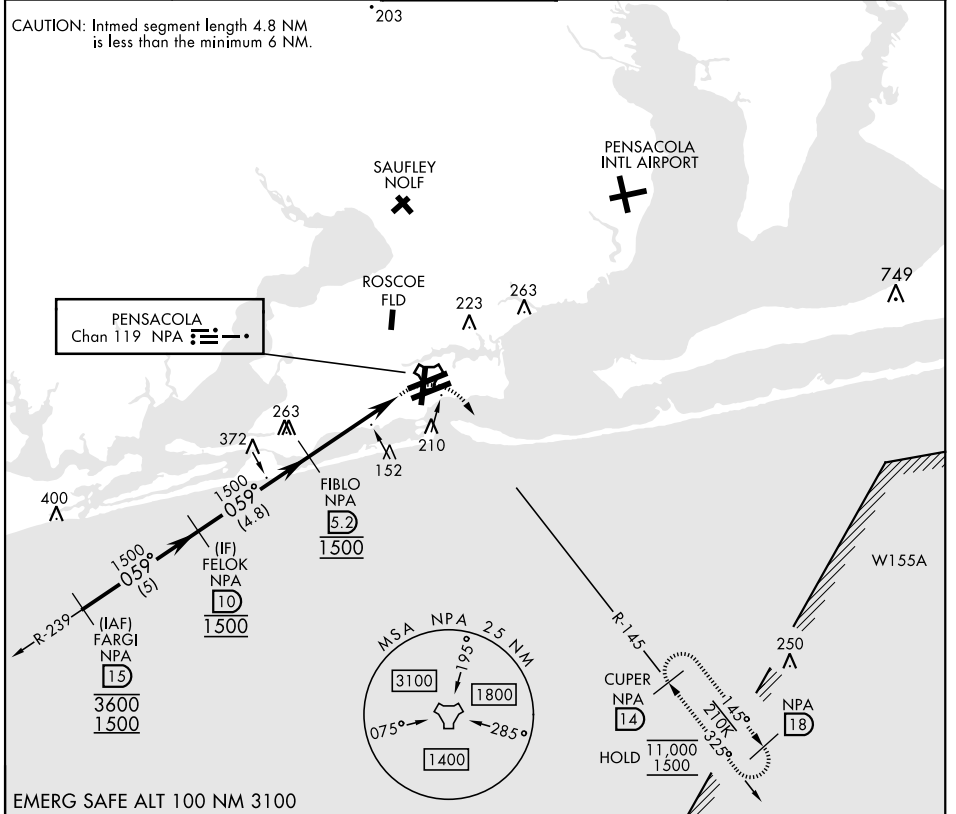


TACAN Y RWY 7R

TACAN NPA Chan 119	APCH CRS 059°	Rwy Idg TDZE Arprt Elev	8001 23 28	[USN]	PENSACOLA NAS (FORREST SHERMAN FLD) (KNPA)		
RADAR required		ALSF-1 A1		MISSED APPROACH: Climbing right turn to 1500 via NPA TACAN R-145 to CUPER and hold.			
ATIS 124.35 266.8	APP CON 120.65 270.8	SHERMAN TOWER 120.7 340.2	GND CON 121.7 336.4	CLNC DEL 134.1 268.7	ASR/ PAR		



EMERG SAFE ALT 100 NM 3100

FELOK NPA (10)	FIBLO NPA (5.2)	NPA (1.9)	NPA TACAN	CUPER NPA (14)	ELEV 28	TDZE 23
1500		1500		1500		
059°		3.05° TCH 55				
		3.9 NM				
		0.5				
CATEGORY	A	B	C	D	E	
S-7R	440-1	415 (500-1)	440-½	415 (500-½)		
CIRCLING	520-1	492 (500-1)	540-1½ 512 (600-1½)	580-2	552 (600-2)	

HILL all rwys
REIL all rwys

TACAN Y RWY 7R

SE-3, 26 DEC 2024 to 23 JAN 2025

SE-3, 26 DEC 2024 to 23 JAN 2025