

# ILS RWY 25 (CAT II)

LITTLE ROCK AFB (KLRF)

LOC I-TYV <b>109.9</b>	APCH CRS <b>252°</b>	Rwy ldg <b>12,007</b> TDZE <b>301</b> Arprt Elev <b>312</b>
---------------------------	-------------------------	---

[USAF]

RNP APCH. RNAV1-GPS or RADAR required.

ALSIF-2

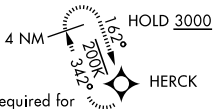
MISSED APPROACH: Climb to 900 then climbing right turn to 3000 direct HERCK and hold.

ATIS ★ <b>119.175 251.1</b>	APP CON <b>119.5 306.2</b>	TOWER <b>120.6 269.075</b>	GND CON <b>132.8 275.8</b>	CLNC DEL <b>253.5</b>
--------------------------------	-------------------------------	-------------------------------	-------------------------------	--------------------------

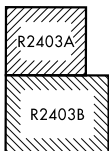
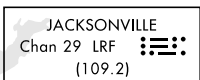
## CATEGORY II ILS-SPECIAL AIRCREW & AIRCRAFT CERTIFICATION REQUIRED

ALTERNATE MISSED APPROACH: Climbing to 3000 fly runway heading until 2 DME, then turn right heading 360° expect further clearance from ATC.

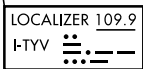
### PROCEDURE EFFECTIVE BY NOTAM



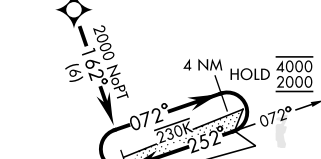
ATC RADAR required for holding above 4000' or greater than 200 KIAS.



CAT E Act: RADAR required when R-2403 active



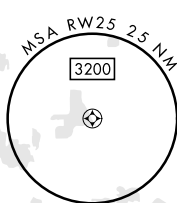
(IAF) AALLI 230K  
AALLI entry NA for CAT E aircraft.



ATC RADAR required for holding above 4000' or greater than 230 KIAS.

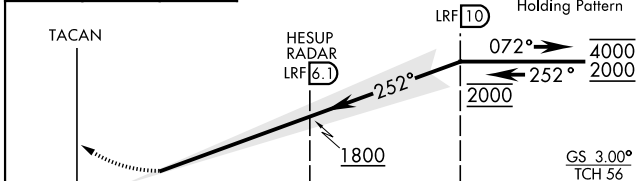
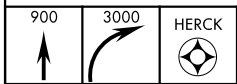
HESUP RADAR LRF 6.1

(IF/IAF) BIELD LRF 10 2000

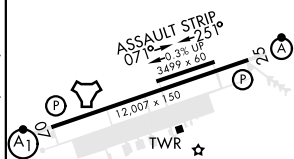


• 823

EMERG SAFE ALT 100 NM 4000



ELEV 312	TDZE 301
----------	----------



CATEGORY	A	B	C	D	E
S-ILS 25	RA 94/12		100	DA 401	

HIRL Rwy 07-25  
TDZ/CL Rwy 25

# ILS RWY 25 (CAT II)

SC-1, 26 DEC 2024 to 23 JAN 2025

SC-1, 26 DEC 2024 to 23 JAN 2025