

TACAN RWY 07

TACAN LRF Chan 29	APCH CRS 058°	Rwy ldg 12,007 TDZE 310 Arprt Elev 312
-----------------------------	-------------------------	---

[USAF]

LITTLE ROCK AFB (KLRF)

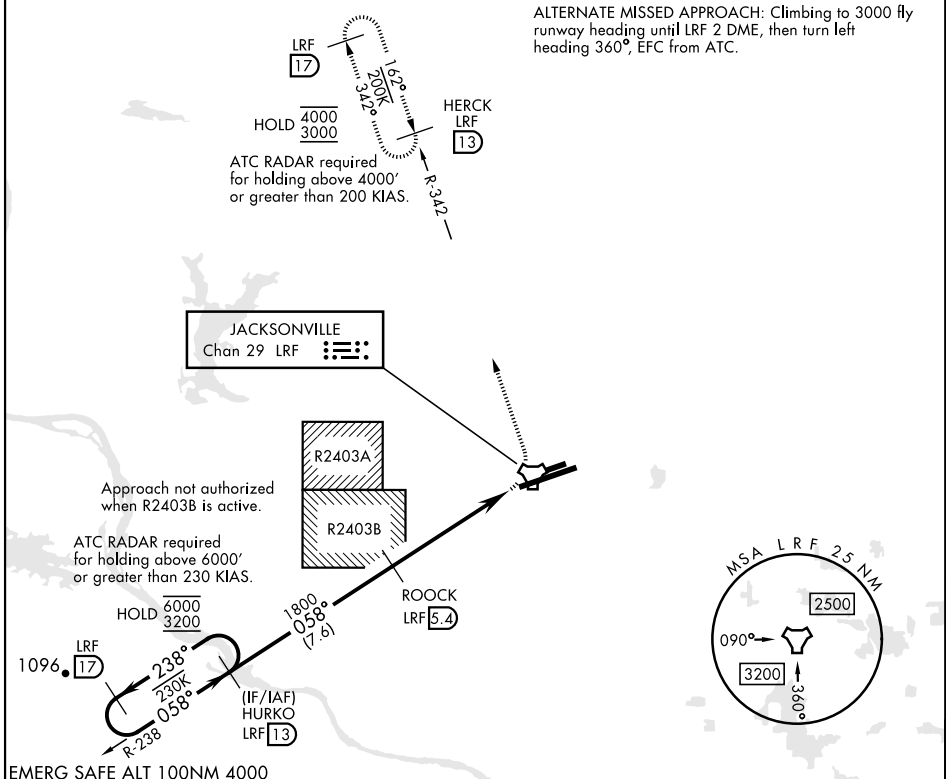
▼ * When ALS inop, increase CAT AB RVR to 55, vis to 1 mile; CAT CDE vis to 1 1/8 miles.
 ** Circling not authorized S of Rwy 07-25.



MISSED APPROACH: Climbing left turn turn to 3000 to intcp LRF R-342 outbound to HERCK and hold as published.

ATIS★ 119.175 251.1	APP CON/DEP CON 119.5 306.2	TOWER 120.6 269.075	GND CON 132.8 275.8	CLNC DEL 253.5
-------------------------------	---------------------------------------	-------------------------------	-------------------------------	--------------------------

ALTERNATE MISSED APPROACH: Climbing to 3000 fly runway heading until LRF 2 DME, then turn left heading 360°, EFC from ATC.



SC-1, 26 DEC 2024 to 23 JAN 2025

SC-1, 26 DEC 2024 to 23 JAN 2025

EMERG SAFE ALT 100NM 4000					
CATEGORY	A	B	C	D	E
S-07*	980/40 670 (700-3/4)		980-1 1/2	670	(700-1 1/2)
CIRCLING**	980-1	668 (700-1)	980-1 7/8 668 (700-1 7/8)	1040-2 1/4 728 (800-2 1/4)	1040-2 1/2 728 (800-2 1/2)
			HIRL Rwy 07-25 TDZL/CL Rwy 25		

TACAN RWY 07