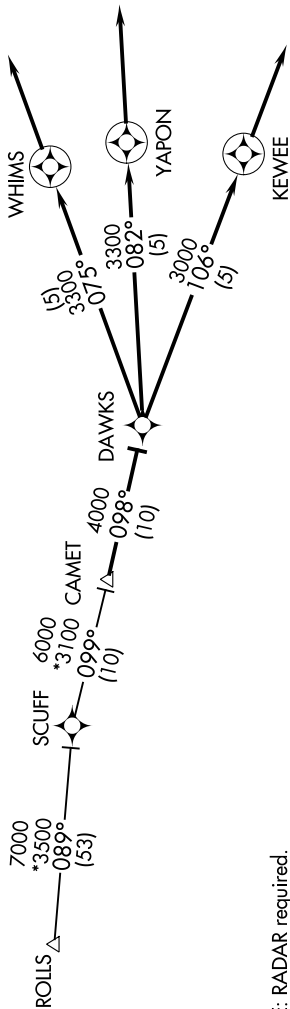


DAWKS ONE ARRIVAL (RNAV)

OKLAHOMA CITY, OKLAHOMA

OKE CITY APP CON
124.6 266.8
KTIK ATIS ★
270.1
OUN AWOS-3PT
119.35
PWA ATIS
128.725



NOTE: RADAR required.
NOTE: RNAV 1.
NOTE: DME/DME/IRU or GPS required.

ARRIVAL ROUTE DESCRIPTION

ROLLS TRANSITION (ROLLS.DAWKS1):

SCUFF TRANSITION (SCUFF.DAWKS1):

From CAMET on track 098° to DAWKS.

LANDING OUN: From DAWKS on track 106° to KEWEE, then on track 106°.

Expect RADAR vectors to final approach course.

LANDING KTIK: From DAWKS on track 082° to YAPON, then on track 082°.

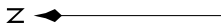
Expect RADAR vectors to final approach course.

LANDING PWA RW17L: From DAWKS on track 075° to WHIMS, then on track 075°.

Expect RADAR vectors to final approach course.

LANDING PWA RW35R: From DAWKS on track 106° to KEWEE, then on track 106°.

Expect RADAR vectors to final approach course.



WILEY POST



TINKER AFB



UNIVERSITY OF OKLAHOMA
WESTHEIMER

NOTE: Chart not to scale.