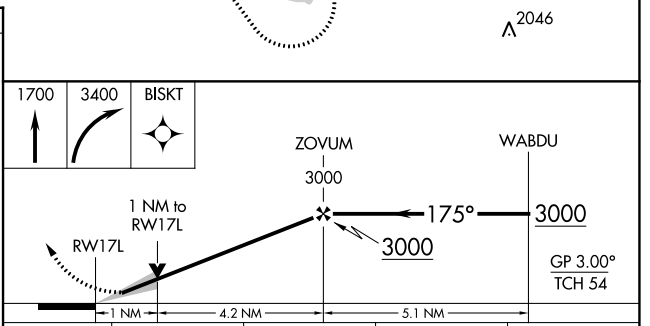
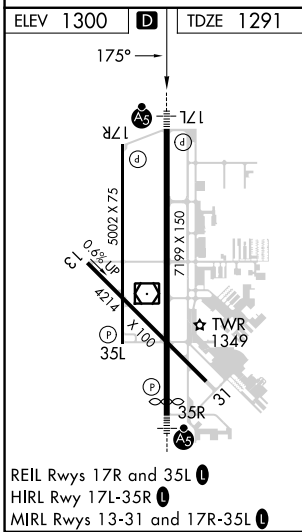
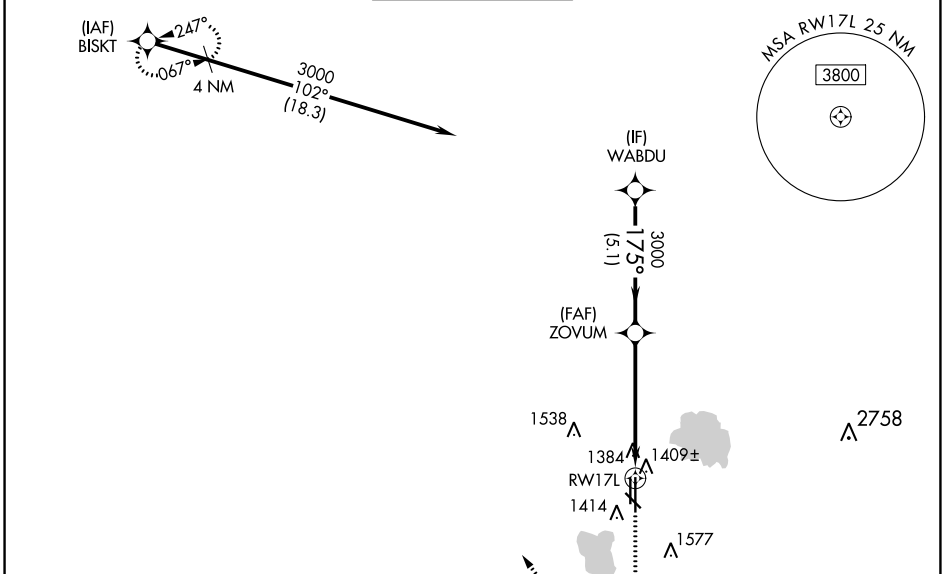


WAAS CH 72737 W17A	APP CRS 175°	Rwy Idg TDZE Apt Elev	6844 1291 1300
--	------------------------	-----------------------------	---

RNAV (GPS) RWY 17L

WILEY POST (PWA)

RNP APCH-GPS.		MALSR MISSED APPROACH: Climb to 1700 then climbing right turn to 3400 direct BISKT and hold.		
ATIS 128.725	OKE CITY APP CON 124.6 266.8	WILEY POST TOWER ★ 126.9 (CTAF) 306.9	GND CON 121.7	UNICOM 122.95



CATEGORY	A	B	C	D
LPV DA	1491-½		200 (200-½)	
LNAV/VNAV DA	1590-½		299 (300-½)	
LNAV MDA	1660-½ 369 (400-½)		1660-⅝ 369 (400-⅝)	
CIRCLING	1780-1 480 (500-1)		1880-1½ 580 (600-1½) 1880-2 580 (600-2)	

SC-1, 26 DEC 2024 to 23 JAN 2025

SC-1, 26 DEC 2024 to 23 JAN 2025