

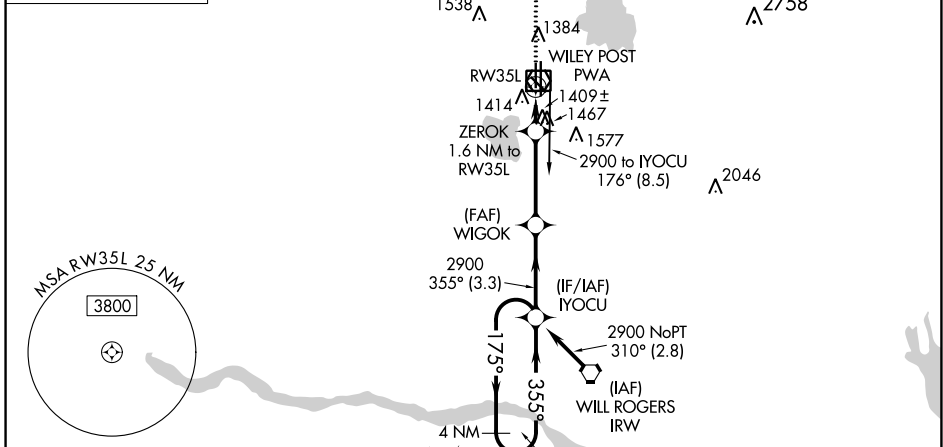
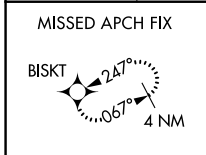
WAAS CH 78437 W35B	APP CRS 355°	Rwy Idg TDZE 1277 Apt Elev 1300
--	------------------------	---

RNAV (GPS) RWY 35L

WILEY POST (PWA)

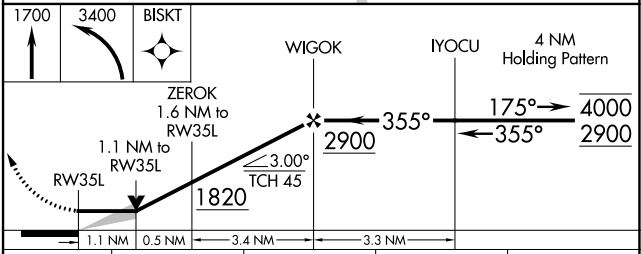
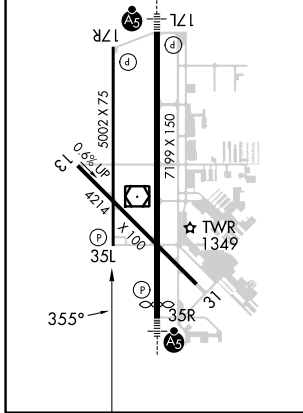
RNP APCH-GPS.		MISSED APPROACH: Climb to 1700 then climbing left turn to 3400 direct BISKT and hold.		
ATIS 128.725	OKE CITY APP CON 124.6 266.8	WILEY POST TOWER ★ 126.9(CTAF) 306.9	GND CON 121.7	UNICOM 122.95

ATIS 128.725	OKE CITY APP CON 124.6 266.8	WILEY POST TOWER ★ 126.9(CTAF) 306.9	GND CON 121.7	UNICOM 122.95
------------------------	--	--	-------------------------	-------------------------



ELEV 1300	D	TDZE 1277
-----------	---	-----------

REIL Rwy 17R and 35L
HIRL Rwy 17L-35R
MIRL Rwy 13-31 and 17R-35L



CATEGORY	A	B	C	D
LP MDA	1660-1	383 (400-1)	1660-1 $\frac{1}{8}$	383 (400-1 $\frac{1}{8}$)
LNAV MDA	1720-1	443 (500-1)	1720-1 $\frac{3}{8}$	443 (500-1 $\frac{3}{8}$)
<input checked="" type="checkbox"/> CIRCLING	1780-1	480 (500-1)	1880-1 $\frac{1}{2}$ 580 (600-1 $\frac{1}{2}$)	1880-2 580 (600-2)

SC-1, 26 DEC 2024 to 23 JAN 2025

SC-1, 26 DEC 2024 to 23 JAN 2025