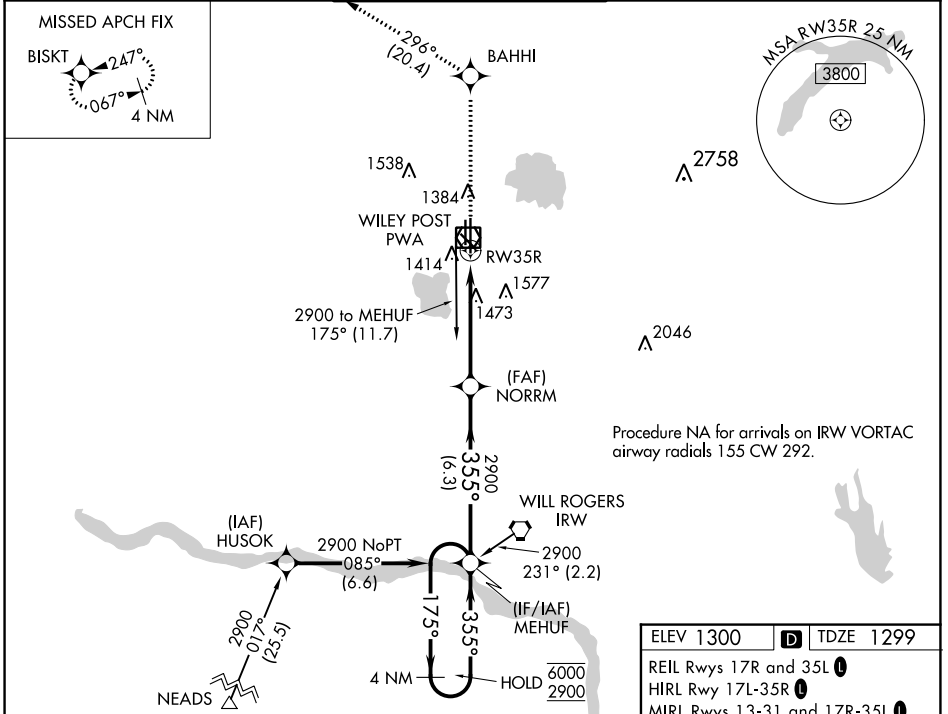


| | | |
|--|------------------------|---|
| WAAS CH 42716 W35A | APP CRS 355° | Rwy Idg TDZE 1299 Apt Elev 1300 |
|--|------------------------|---|

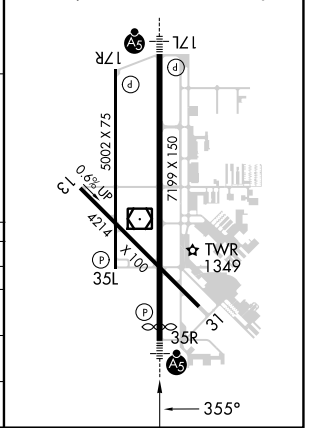
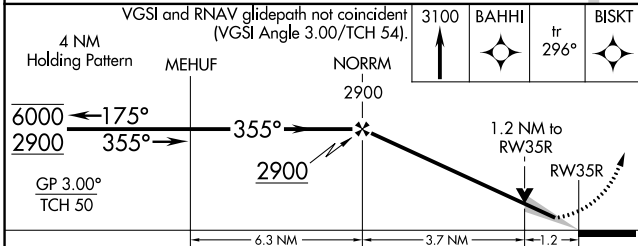
RNAV (GPS) RWY 35R

WILEY POST (PWA)

| | | | | | |
|--|--|---|--|-------------------------|-------------------------|
| RNP APCH-GPS. For uncompensated Baro-VNAV systems, LNAV/VNAV NA below -13°C or above 54°C. ASR | | MALS R | MISSED APPROACH: Climb to 3100 direct BAHHI and on track 296° to BISKI and hold. | | |
| ATIS 128.725 | OKE CITY APP CON 124.6 266.8 | WILEY POST TOWER ★ 126.9 (CTAF) 306.9 | | GND CON 121.7 | UNICOM 122.95 |



| | |
|----------------------------|-----------|
| ELEV 1300 | TDZE 1299 |
| REIL Rwy 17R and 35L | |
| HIRL Rwy 17L-35R | |
| MIRL Rwy 13-31 and 17R-35L | |



| CATEGORY | A | B | C | D |
|--------------|------------------------|---|---|---|
| LPV DA | 1499-1/2 | | 200 (200-1/2) | |
| LNAV/VNAV DA | 1755-7/8 | | 456 (500-7/8) | |
| LNAV MDA | 1740-1/2 441 (500-1/2) | | 1740-7/8 441 (500-7/8) | |
| CIRCLING | 1780-1 480 (500-1) | | 1880-1 580 (600-1/2) 1880-2 580 (600-2) | |