

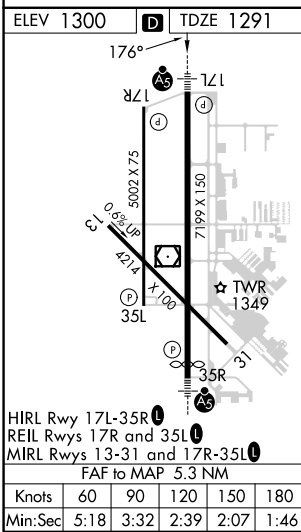
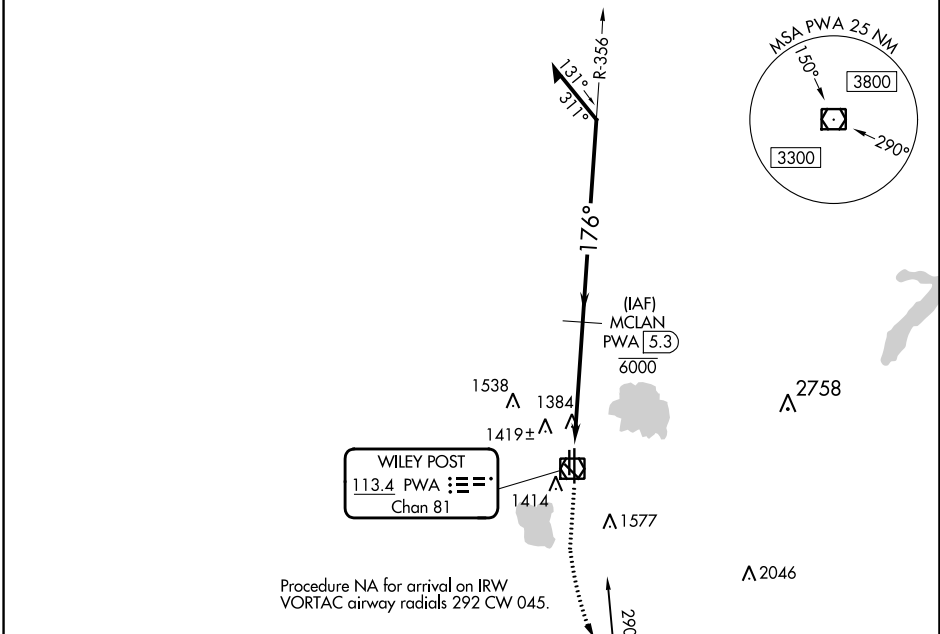
VOR/DME PWA 113.4 Chan 81	APP CRS 176°	Rwy Idg TDZE Apt Elev	6844 1291 1300
---	------------------------	-----------------------------	---

VOR RWY 17L

WILEY POST (PWA)

DME required.		MALSR	MISSED APPROACH: Climb to 1700 then climbing left turn to 3000 direct IRW VORTAC and hold.
ASR			

ATIS 128.725	OKE CITY APP CON 124.6 266.8	WILEY POST TOWER★ 126.9(CTAF) 306.9	GND CON 121.7	UNICOM 122.95
------------------------	--	---	-------------------------	-------------------------



WILEY POST 113.4 PWA Chan 81	WILL ROGERS 114.1 IRW Chan 88	MCLAN PWA 5.3 6000	Remain within 10 NM								
<table border="1"> <tr> <td>1700</td> <td>3000</td> <td>IRW</td> </tr> </table>		1700	3000	IRW	<table border="1"> <tr> <td>356°</td> <td>2800</td> </tr> <tr> <td>176°</td> <td>2800</td> </tr> <tr> <td>176°</td> <td>2800</td> </tr> </table>	356°	2800	176°	2800	176°	2800
1700	3000	IRW									
356°	2800										
176°	2800										
176°	2800										
<table border="1"> <tr> <td>0.7</td> <td>1.1</td> <td>3.5 NM</td> </tr> </table>		0.7	1.1	3.5 NM							
0.7	1.1	3.5 NM									
CATEGORY	A	B	C	D							
S-17L	1680-½	389 (400-½)	1680-⅝	389 (400-⅝)							