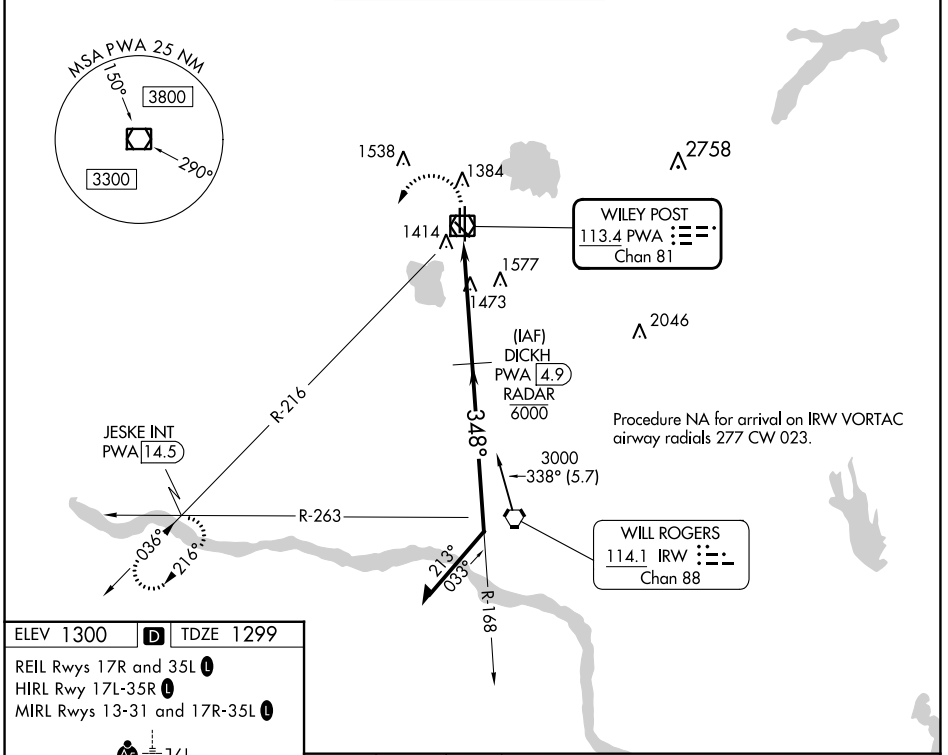


VOR/DME PWA 113.4 Chan 81	APP CRS 348°	Rwy Idg TDZE Apt Elev	6843 1299 1300
---	------------------------	-----------------------------	---

VOR RWY 35R

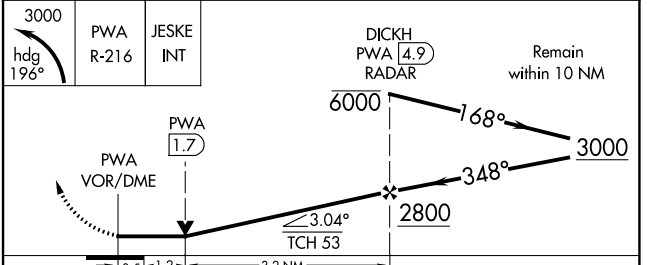
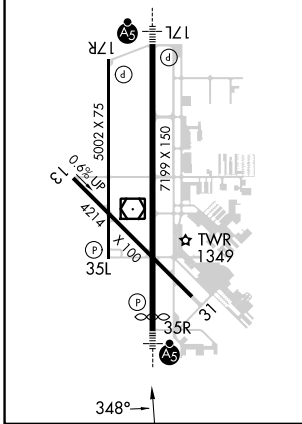
WILEY POST (PWA)

DME or RADAR required.		MALSR 	MISSED APPROACH: Climbing left turn to 3000 on heading 196° and PWA R-216 to JESKE INT/PWA 14.5 DME and hold.	
ATIS 128.725	OKE CITY APP CON 124.6 266.8	WILEY POST TOWER ★ 126.9 (CTAF) 306.9	GND CON 121.7	UNICOM 122.95



ELEV 1300	D	TDZE 1299
-----------	---	-----------

REIL Rws 17R and 35L
HIRL Rwy 17L-35R
MIRL Rws 13-31 and 17R-35L



CATEGORY	A	B	C	D
S-35R	1740-1/2	441 (500-1/2)	1740-7/8	441 (500-7/8)
C CIRCLING	1780-1	480 (500-1)	1880-1 1/2 580 (600-1 1/2)	1880-2 580 (600-2)

SC-1, 26 DEC 2024 to 23 JAN 2025

SC-1, 26 DEC 2024 to 23 JAN 2025