

WAAS CH <b>90503</b> <b>W19A</b>	APP CRS <b>190°</b>	Rwy Idg <b>6001</b> TDZE <b>19</b> Apt Elev <b>19</b>
--	------------------------	---

# RNAV (GPS) RWY 19

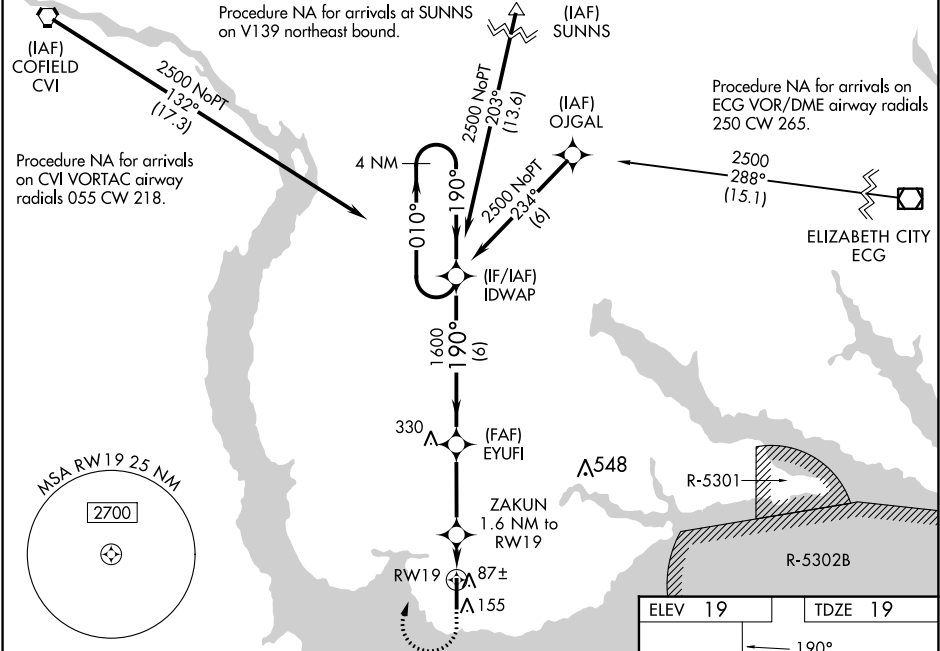
NORTHEASTERN RGNL (E·D·E)

RNP APCH - GPS

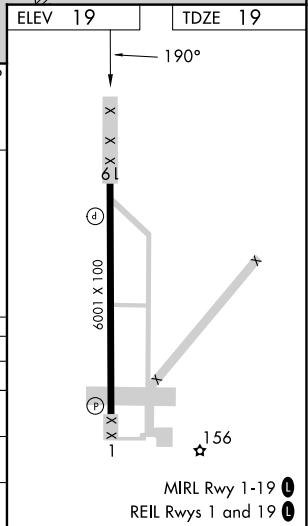
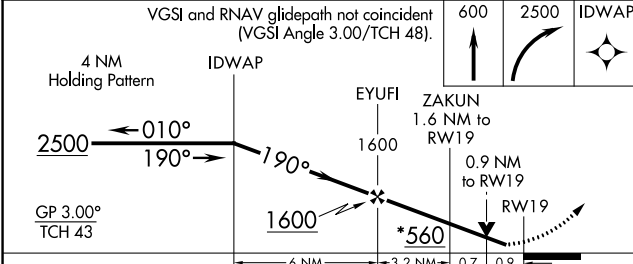
▼ Baro-VNAV NA when using Elizabeth City altimeter setting. For uncompensated Baro-VNAV systems, LNAV/VNAV NA below -15°C or above 43°C. When local altimeter setting not received, use Elizabeth City altimeter setting and increase LPV DA to 276 feet; increase LNAV/VNAV DA to 355 feet and all visibilities ½ SM; increase all MDAs 60 feet and LNAV visibility Cat C/D ¼ SM, and Circling visibility reduction below ¾ SM NA.

MISSED APPROACH: Climb to 600 then right turn to 2500 direct IDWAP and hold.

AWOS-3 <b>118.275</b>	WASHINGTON CENTER <b>123.85 279.65</b>	UNICOM <b>123.0 (CTAF) 0</b>
--------------------------	---	---------------------------------



VGSI and RNAV glidepath not coincident (VGSI Angle 3.00/TCH 48).



CATEGORY	A	B	C	D
LPV DA		219-¾	200 (200-¾)	
LNAV/VNAV DA		289- 7/8	270 (300-7/8)	
LNAV MDA		400-1 1/8	381 (400-1 1/8)	
CIRCLING	520-1	501 (600-1)	560-1 1/2 541 (600-1 1/2)	580-2 561 (600-2)

SE-2, 26 DEC 2024 to 23 JAN 2025

SE-2, 26 DEC 2024 to 23 JAN 2025