

LOC/DME I-RBD <b>110.75</b> Chan <b>44</b> (Y)	APP CRS <b>309°</b>	Rwy Idg TDZE <b>6601</b> <b>660</b> Apt Elev <b>661</b>
--	------------------------	---

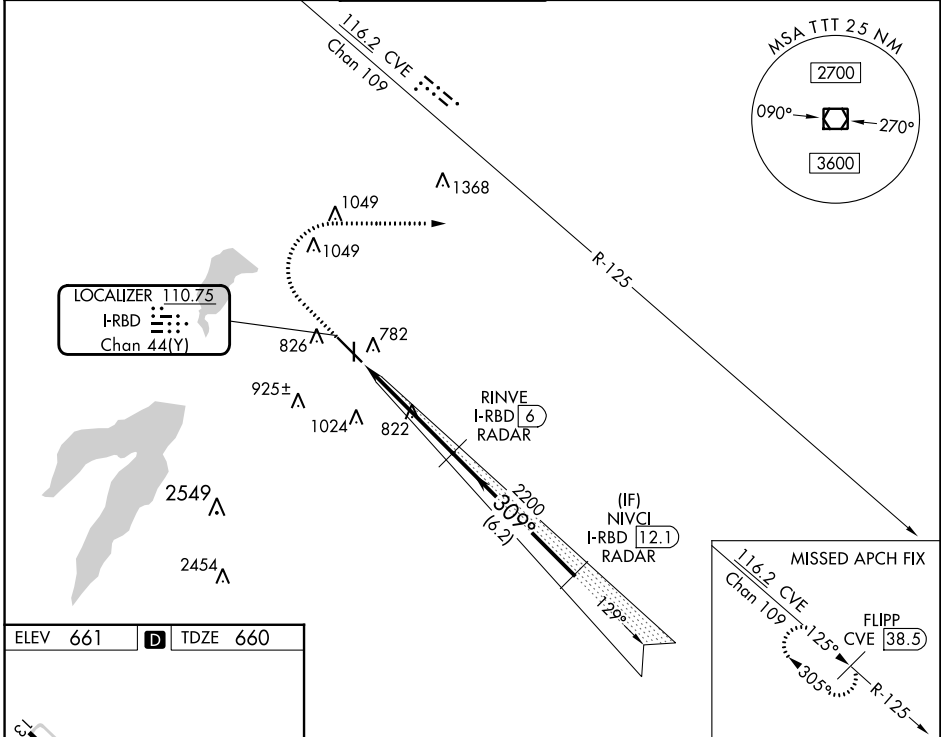
# ILS or LOC RWY 31

DALLAS EXEC (R.BD)

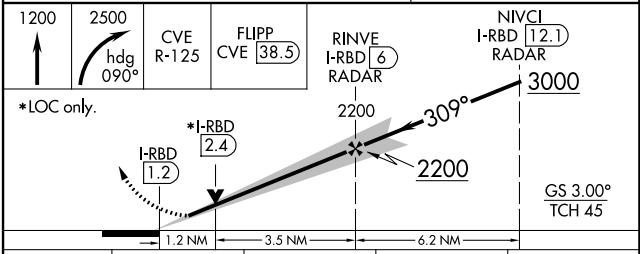
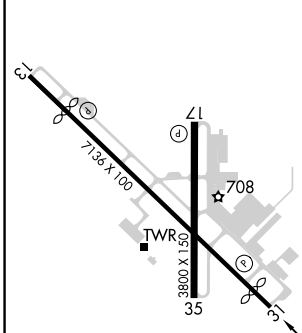
RADAR required for procedure entry, DME or RADAR required for LOC only.

MISSED APPROACH: Climb to 2500 then climbing right turn to 2500 on heading 090° and CVE  
VOR/DME R-125 to FLIPP/CVE 38.5 DME and hold.

ATIS <b>126.35</b>	LONE STAR APP CON <b>125.2 343.65</b>	EXECUTIVE TOWER* <b>127.25</b> (CTAF) <b>0</b>	GND CON <b>119.475</b>	CLNC DEL <b>118.625</b>	UNICOM <b>122.95</b>
-----------------------	--	---	---------------------------	----------------------------	-------------------------



ELEV 661	<b>D</b>	TDZE 660
----------	----------	----------



REIL Rwy 13, 17, 31 and 35 MIRL Rwy 13-31 and 17-35 <b>0</b> FAF to MAP 4.7 NM	Knots 60 90 120 150 180			
Min:Sec 4:42 3:08 2:21 1:53 1:34	Min:Sec 4:42 3:08 2:21 1:53 1:34			
<b>C</b> CIRCLING	1160-1 499 (500-1)	1220-1 559 (600-1)	1340-2 679 (700-2)	1400-2½ 739 (800-2½)

SC-2, 26 DEC 2024 to 23 JAN 2025

SC-2, 26 DEC 2024 to 23 JAN 2025