

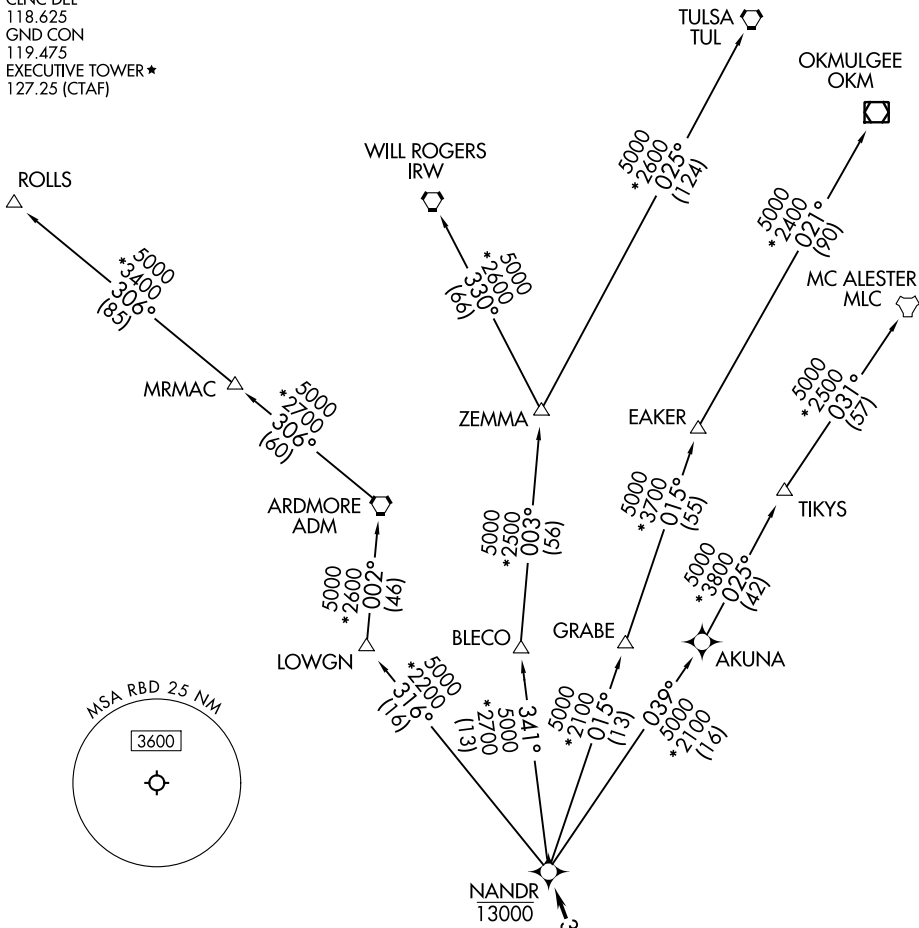
NANDR TWO DEPARTURE (RNAV)

LONE STAR DEP CON
125.2 343.65
ATIS
126.35
CLNC DEL
118.625
GND CON
119.475
EXECUTIVE TOWER ★
127.25 (CTAF)

RNAV 1 - DME/DME/IRU or GPS.

RADAR required.

**TOP ALTITUDE:
ASSIGNED BY ATC**



SC-2, 26 DEC 2024 to 23 JAN 2025

SC-2, 26 DEC 2024 to 23 JAN 2025

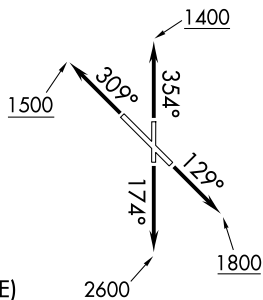
TAKEOFF MINIMUMS

Rwys 13, 31, 35: Standard.
Rwy 17: 400-2¾ or standard with
minimum climb of 220' per NM to 1200.

NOTE: EAKER transition: For TUL terminal arrivals only.
NOTE: TULSA transition: For all aircraft overflying TUL VORTAC.
NOTE: Aircraft arriving to the Oklahoma City terminal area,
file and expect the ZEMMA enroute transition.

NOTE: Chart not to scale.

(CONTINUED ON FOLLOWING PAGE)



NANDR TWO DEPARTURE (RNAV)



DEPARTURE ROUTE DESCRIPTION

TAKEOFF RUNWAY 13: Climb on heading 129° to 1800 before turning westbound or as assigned by ATC, thence

TAKEOFF RUNWAY 17: Climb on heading 174° to 2600 before turning westbound or as assigned by ATC, thence

TAKEOFF RUNWAY 31: Climb on heading 309° to 1500 before turning southbound or as assigned by ATC, thence

TAKEOFF RUNWAY 35: Climb on heading 354° to 1400 before turning southbound or as assigned by ATC, thence

. . . . expect RADAR vectors to cross CUZNO at or above 3000, then on track 357° to cross NANDR at or below 13000, then on assigned transition.

EAKER TRANSITION (NANDR2.EAKER)

MC ALESTER TRANSITION (NANDR2.MLC)

OKMULGEE TRANSITION (NANDR2.OKM)

ROLLS TRANSITION (NANDR2.ROLLS)

TULSA TRANSITION (NANDR2.TUL)

WILL ROGERS TRANSITION (NANDR2.IRW)

ZEMMA TRANSITION (NANDR2.ZEMMA)

SC-2, 26 DEC 2024 to 23 JAN 2025

SC-2, 26 DEC 2024 to 23 JAN 2025