

DALLAS, TEXAS

AL-742 (FAA)

24305

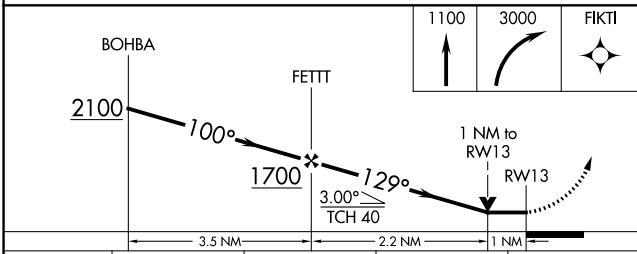
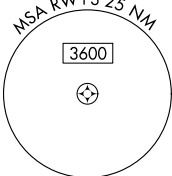
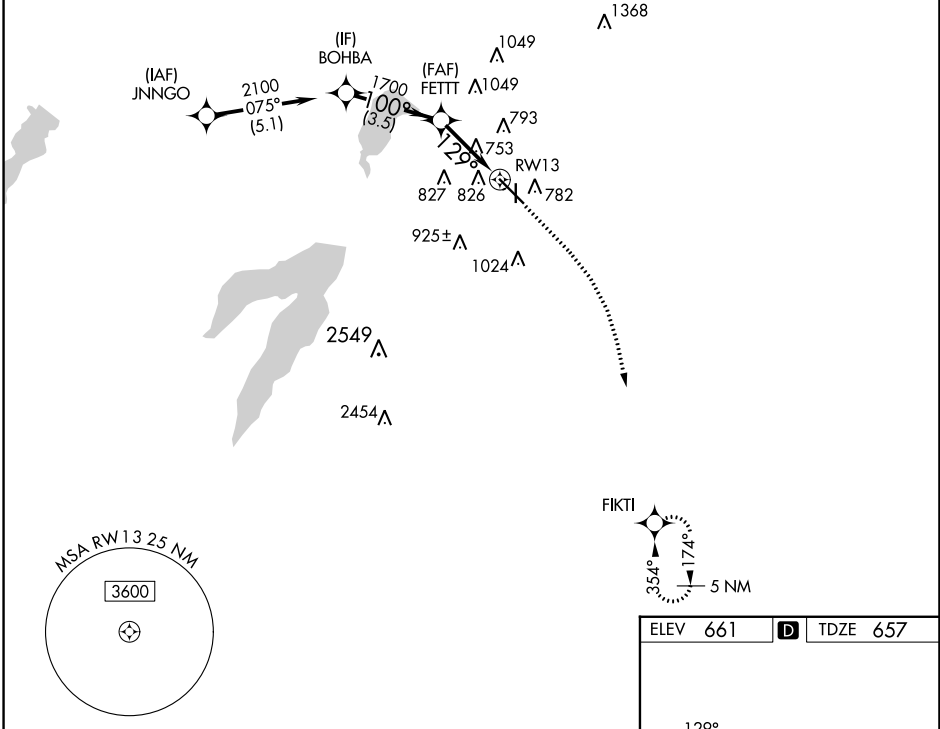
WAAS CH 78444 W13A	APP CRS 129°	Rwy Idg TDZE Apt Elev	5537 657 661
--	------------------------	-----------------------------	---

RNAV (GPS) RWY 13

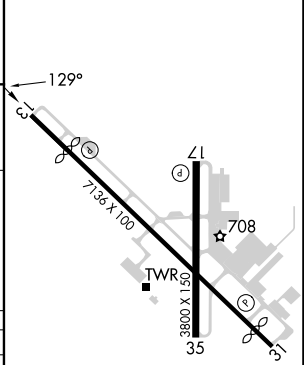
DALLAS EXEC (R.B.D)

RNP APCH-GPS.		MISSED APPROACH: Climb to 1100 then climbing right turn to 3000 direct FIKTI and hold.			
Rwy 13 helicopter visibility reduction below 3/4 SM NA.					

ATIS 126.35	LONE STAR APP CON 125.2 343.65	EXECUTIVE TOWER * 127.25 (CTAF)	GND CON 119.475	CLNC DEL 118.625	UNICOM 122.95
-----------------------	--	---	---------------------------	----------------------------	-------------------------



ELEV 661		TDZE 657
----------	--	----------



CATEGORY	A	B	C	D
LP MDA	1020-1 363 (400-1)			
LNAV MDA	1060-1 403 (400-1)	1060-1 1/8 403 (400-1 1/8)		
CIRCLING	1160-1 499 (500-1)	1220-1 559 (600-1)	1340-1 3/4 679 (700-1 3/4)	1400-2 1/4 739 (800-2 1/4)

REIL Rwy 13, 17, 31 and 35
MIRL Rwy 13-31 and 17-35

DALLAS, TEXAS
Orig 23FEB23

32°41'N-96°52'W

RNAV (GPS) RWY 13

SC-2, 26 DEC 2024 to 23 JAN 2025

SC-2, 26 DEC 2024 to 23 JAN 2025