

DALLAS, TEXAS

AL-742 (FAA)

24305

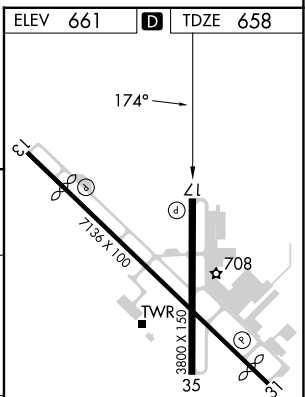
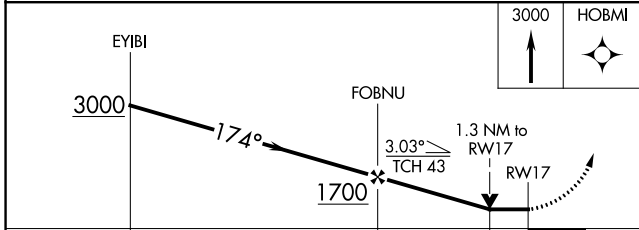
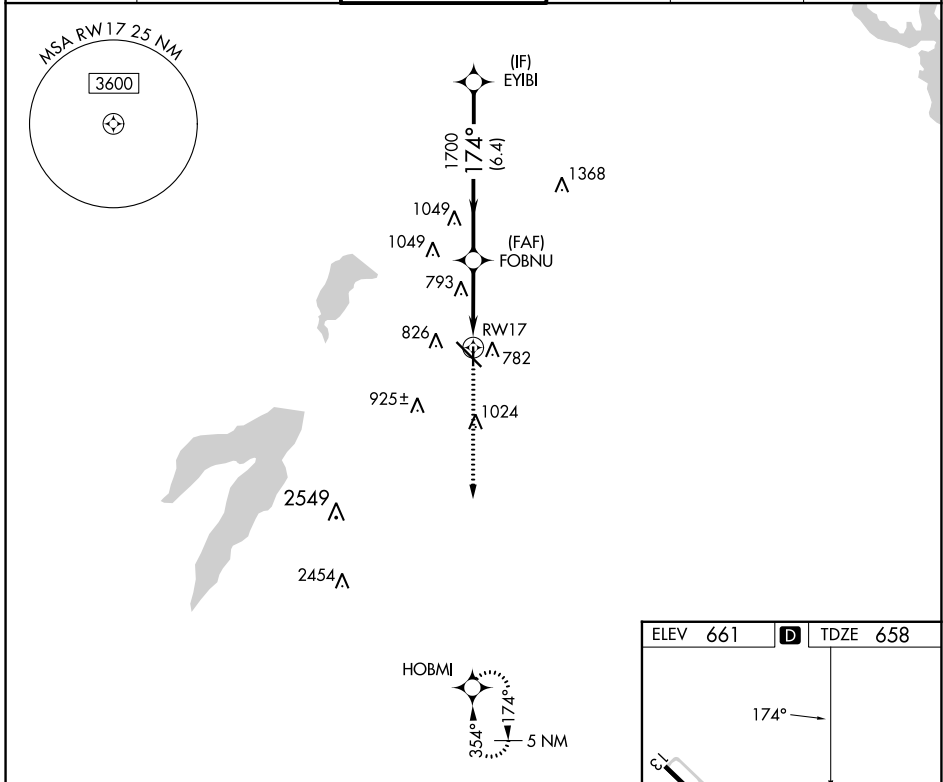
APP CRS 174°	Rwy Idg TDZE Apt Elev	3800 658 661
------------------------	-----------------------------	---

RNAV (GPS) RWY 17

DALLAS EXEC (R.B.D)

RNP APCH.		MISSED APPROACH: Climb to 3000 direct HOBMI and hold.			
Rwy 17 helicopter visibility reduction below 3/4 SM NA.					

ATIS 126.35	LONE STAR APP CON 125.2 343.65	EXECUTIVE TOWER * 127.25 (CTAF)	GND CON 119.475	CLNC DEL 118.625	UNICOM 122.95
-----------------------	--	---	---------------------------	----------------------------	-------------------------



	6.4 NM		1.8 NM		1.3
CATEGORY	A	B	C	D	
RNAV MDA	1100-1	442 (500-1)	1100-1 $\frac{3}{8}$ 442 (500-1 $\frac{3}{8}$)	1100-1 $\frac{1}{2}$ 442 (500-1 $\frac{1}{2}$)	
CIRCLING	1160-1 499 (500-1)	1220-1 559 (600-1)	1340-2 679 (700-2)	1400-2 $\frac{1}{4}$ 739 (800-2 $\frac{1}{4}$)	

REIL Rwy 13, 17, 31 and 35
MIRL Rwy 13-31 and 17-35

DALLAS, TEXAS
Orig-B 03DEC20

32°41'N-96°52'W

RNAV (GPS) RWY 17

SC-2, 26 DEC 2024 to 23 JAN 2025

SC-2, 26 DEC 2024 to 23 JAN 2025