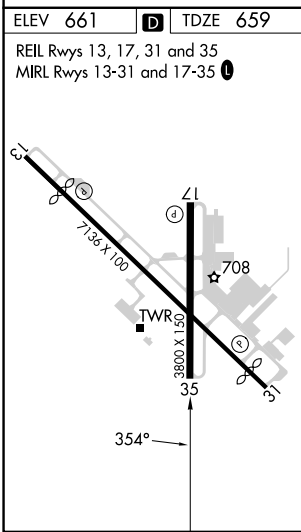
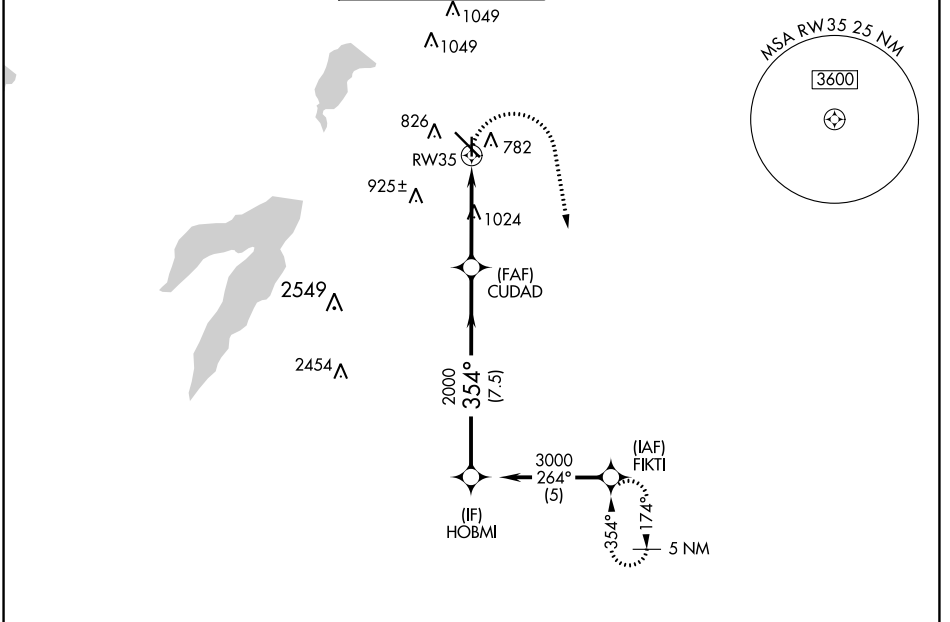


APP CRS 354°	Rwy Idg 3800
	TDZE 659
	Apt Elev 661

RNAV (GPS) RWY 35

DALLAS EXEC (R.B.D)

RADAR required for procedure entry. RNP APCH.		MISSED APPROACH: Climbing right turn to 3000 direct FIKTI and hold.			
ATIS 126.35	LONE STAR APP CON 125.2 343.65	EXECUTIVE TOWER ★ 127.25 (CTAF) 0	GND CON 119.475	CLNC DEL 118.625	UNICOM 122.95



ELEV 661	D	TDZE 659		
REIL Rwy 13, 17, 31 and 35 MIRL Rwy 13-31 and 17-35				
<p>Diagram showing the final approach segment from CUDAD to RWY 35. The path is 1.8 NM to RWY 35, then 2.2 NM to CUDAD, and 7.5 NM to HOBMI. The heading is 354° and the altitude is 2000 feet. A 3.04° track angle (TCH 45) is indicated. A missed approach path is shown as a dashed line curving right to 3000 feet and then to the IAF FIKTI.</p>				
CATEGORY	A	B	C	D
LNAV MDA	1280-1	621 (700-1)	1280-1¾ 621 (700-1¾)	1280-2 621 (700-2)
C CIRCLING	1280-1	619 (700-1)	1340-2 679 (700-2)	1400-2¼ 739 (800-2¼)

SC-2, 26 DEC 2024 to 23 JAN 2025

SC-2, 26 DEC 2024 to 23 JAN 2025