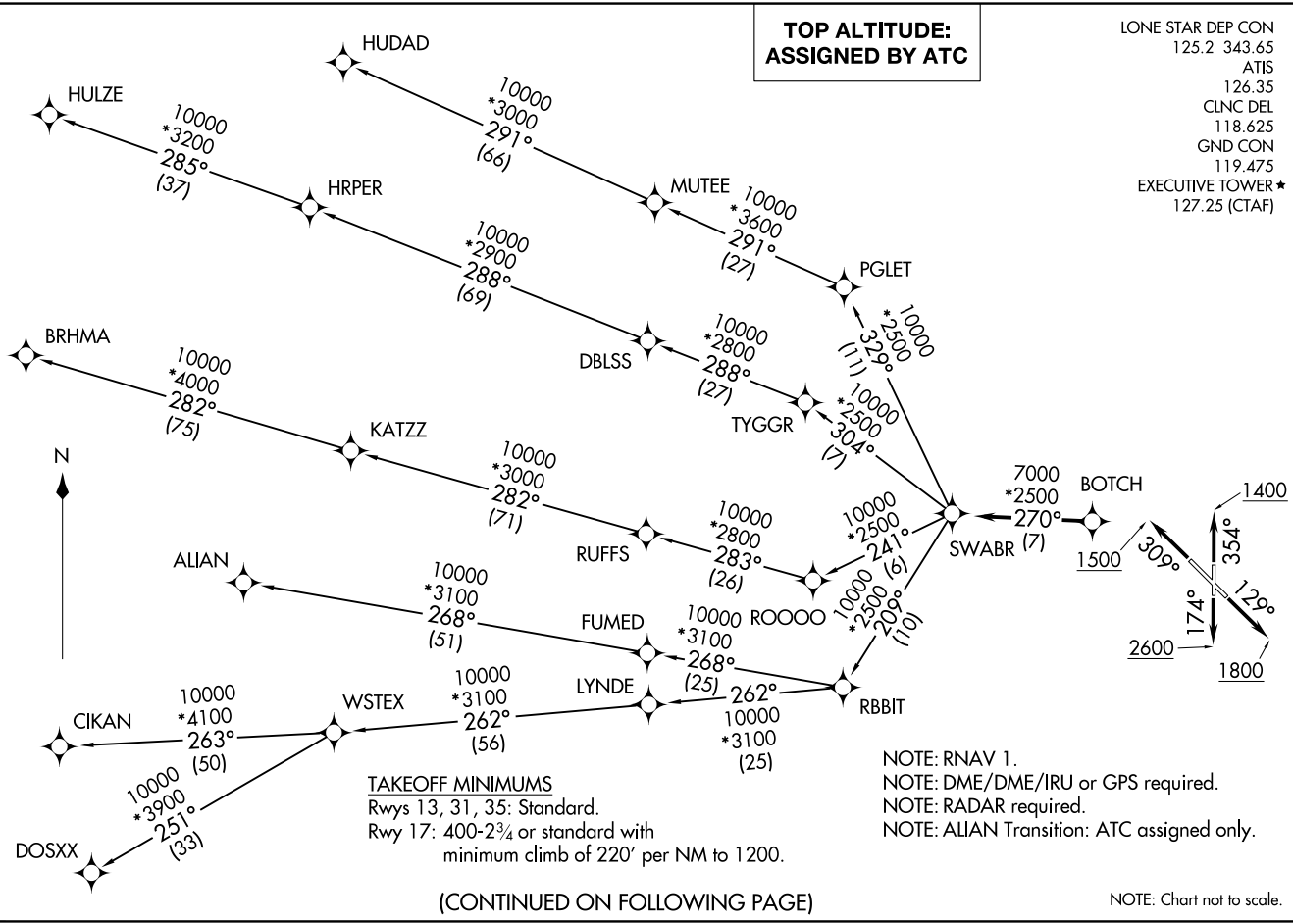


**TOP ALTITUDE:
ASSIGNED BY ATC**

LONE STAR DEP CON
125.2 343.65
ATIS
126.35
CLNC DEL
118.625
GND CON
119.475
EXECUTIVE TOWER ★
127.25 (CTAF)



SWABR ONE DEPARTURE (RNAV)
(SWABR1 .SWABR) 24MAR22

(SWABR1 .SWABR) 24305
AL-742 (FAA)

DALLAS, TEXAS
DALLAS EXEC (RBD)

DALLAS EXEC (RBD)
DALLAS, TEXAS

(CONTINUED ON FOLLOWING PAGE)

NOTE: Chart not to scale.

SWABR ONE DEPARTURE (RNAV)



DEPARTURE ROUTE DESCRIPTION

TAKEOFF RUNWAY 13: Climb on heading 129° to 1800 before turning westbound.

TAKEOFF RUNWAY 17: Climb on heading 174° to 2600 before turning westbound.

TAKEOFF RUNWAY 31: Climb on heading 309° to 1500 before turning southbound.

TAKEOFF RUNWAY 35: Climb on heading 354° to 1400 before turning southbound.

When entering controlled airspace, fly heading assigned by ATC, expect vectors to BOTCH, then on track 270° to SWABR, then on assigned transition. Maintain ATC assigned altitude, expect filed altitude 10 minutes after departure.

ALIAN TRANSITION (SWABR1.ALIAN)

BRHMA TRANSITION (SWABR1.BRHMA)

CIKAN TRANSITION (SWABR1.CIKAN)

DOSXX TRANSITION (SWABR1.DOSXX)

HUDAD TRANSITION (SWABR1.HUDAD)

HULZE TRANSITION (SWABR1.HULZE)

WSTEX TRANSITION (SWABR1.WSTEX)

SC-2, 26 DEC 2024 to 23 JAN 2025

SC-2, 26 DEC 2024 to 23 JAN 2025