

APP CRS	Rwy Idg	<b>3751</b>
<b>001°</b>	TDZE	<b>534</b>
	Apt Elev	<b>537</b>

# RNAV (GPS) RWY 36

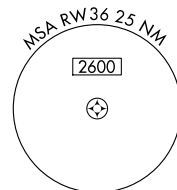
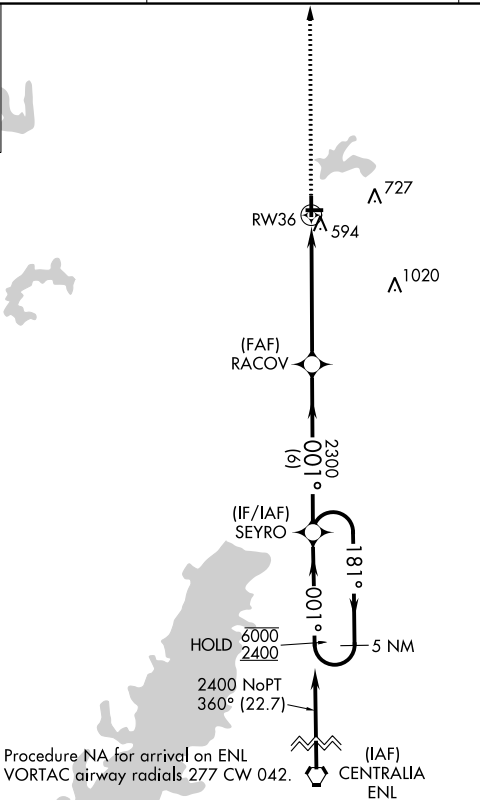
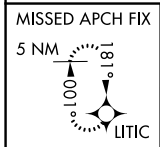
VANDALIA MUNI (VLA)

RNP APCH - GPS.

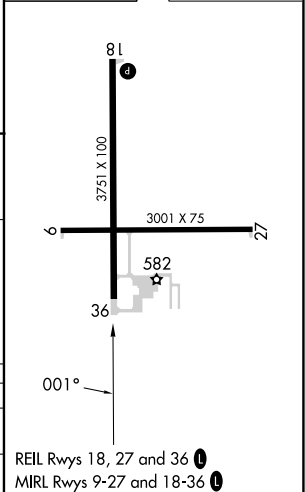
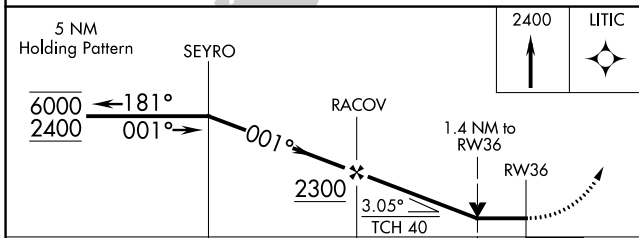
**⚠** Rwy 36 helicopter visibility reduction below ¾ SM NA. When local altimeter setting not received, use Salem altimeter setting; increase all MDAs 60 feet and visibility Cats C and D ¼ SM.

MISSED APPROACH: Climb to 2400 direct LITIC and hold.

AWOS-AV <b>122.8</b>	KANSAS CITY CENTER <b>124.3 269.15</b>	UNICOM <b>122.8 (CTAF) 1</b>
-------------------------	---	---------------------------------



ELEV 537	TDZE 534
----------	----------



CATEGORY	A	B	C	D
LNVA MDA	1020-1	486 (500-1)	1020-1 <sup>3</sup> / <sub>8</sub>	486 (500-1 <sup>3</sup> / <sub>8</sub> )
CIRCLING	1040-1	503 (600-1)	1060-1 <sup>1</sup> / <sub>2</sub> 523 (600-1 <sup>1</sup> / <sub>2</sub> )	1220-2 <sup>1</sup> / <sub>4</sub> 683 (700-2 <sup>1</sup> / <sub>4</sub> )

REIL Rwy 18, 27 and 36 **1**  
MIRL Rwy 9-27 and 18-36 **1**

EC-3, 26 DEC 2024 to 23 JAN 2025

EC-3, 26 DEC 2024 to 23 JAN 2025