

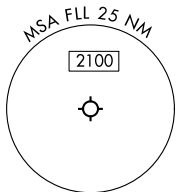
RNAV 1 - DME/DME/IRU or GPS.
RADAR required for non-GPS equipped aircraft.

**TOP ALTITUDE:
4000**

MIAMI DEP CON 126.05 251.1
D-ATIS 135.0
CLNC DEL 128.4
CPDLC
GND CON 121.4
FORT LAUDERDALE TOWER 119.3 257.8

TAKEOFF MINIMUMS

Rwys 10L/R, 28L/R: Standard with minimum climb of 500'/NM to 580.



See following page for transition routes.

BNICE

323°
(12)

MRENO
4000

285°
(42)

296°
(25)

LRICK

298°
(5) YOLOO

347°
(4) ROOOM
4000

029°
(4) LLBOW

HEPAD

SEAZZ

KBUNK

318°
(13)

319°
(14)

275°
(4)

580

276°

275°
(4)

580

276°

080°

096°

065°

DUSKE

TIDEZ

NOTE: Jet aircraft only.
NOTE: Accelerate to 250K until leaving 10000, if unable, advise ATC.
NOTE: MERKS Transition ATC assigned only except aircraft landing: MKY, RSW, APF, PGD, FMY.

NOTE: Chart not to scale.

(CONTINUED ON FOLLOWING PAGE)

BNICE TWO DEPARTURE (RNAV) Departure Routes
BNICE2, BNICE] 21 MAR 24
FORT LAUDERDALE/HOLLYWOOD INTL (FLL)

AL-744 (FAA)
FORT LAUDERDALE/HOLLYWOOD INTL (FLL)
BNICE2, BNICE] 241 09
FORT LAUDERDALE, FLORIDA
FORT LAUDERDALE, FLORIDA



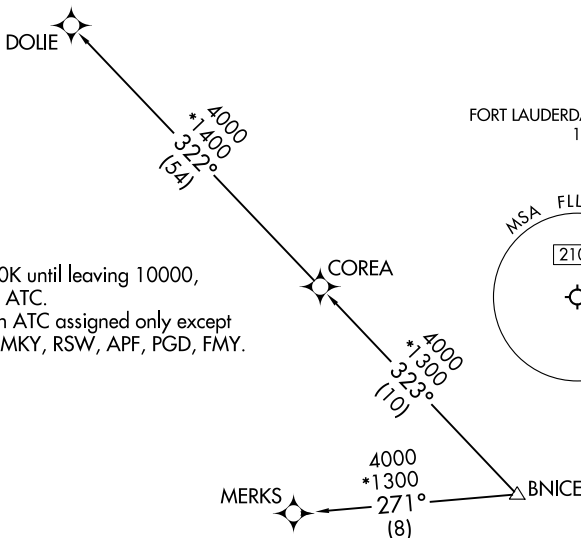
BNICE TWO DEPARTURE (RNAV) Transition Routes

FORT LAUDERDALE, FLORIDA

RNAV 1 - DME/DME/IRU or GPS.
RADAR required for non-GPS equipped aircraft.

**TOP ALTITUDE:
4000**

MIAMI DEP CON	126.05	251.1
D-ATIS		135.0
CLNC DEL		128.4
CPDLC		
GND CON		121.4
FORT LAUDERDALE TOWER		119.3
		257.8



NOTE: Jet aircraft only.
 NOTE: Accelerate to 250K until leaving 10000, if unable, advise ATC.
 NOTE: MERKS Transition ATC assigned only except aircraft landing: MKY, RSW, APF, PGD, FMY.

SE-3, 26 DEC 2024 to 23 JAN 2025

SE-3, 26 DEC 2024 to 23 JAN 2025



DEPARTURE ROUTE DESCRIPTION

SEE ADDITIONAL REQUIREMENTS ON AAUP

TAKEOFF RUNWAY 10L: Climb on heading 096° to intercept course 080° to LLBOW, then on track 026° to cross ROOOM at or above 4000, then on track 347° to YOLOO, then on track 298° to LRICK, then on track 285° to cross MRENO at or above 4000, thence. . .

TAKEOFF RUNWAY 10R: Climb on heading 096° to intercept course 065° to LLBOW, then on track 026° to cross ROOOM at or above 4000, then on track 347° to YOLOO, then on track 298° to LRICK, then on track 285° to cross MRENO at or above 4000, thence. . .

TAKEOFF RUNWAY 28L: Climb on heading 276° to 580, then direct TIDEZ, then on track 275° to DUSKE, then on track 319° to KBUNK, then on track 296° to cross MRENO at or above 4000, thence. . .

TAKEOFF RUNWAY 28R: Climb on heading 276° to 580, then direct SEAZZ, then on track 275° to HEPAD, then on track 318° to KBUNK, then on track 296° to cross MRENO at or above 4000, thence. . .

. . . on track 323° to BNICE then on assigned transition, maintain 4000, expect clearance to filed altitude within 10 minutes after departure.

- COREA TRANSITION (BNICE2.COREA)
- DOLIE TRANSITION (BNICE2.DOLIE)
- MERKS TRANSITION (BNICE2.MERKS)

BNICE TWO DEPARTURE (RNAV) Transition Routes

FORT LAUDERDALE, FLORIDA