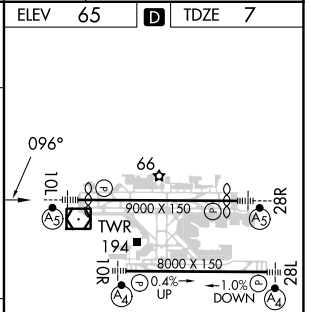
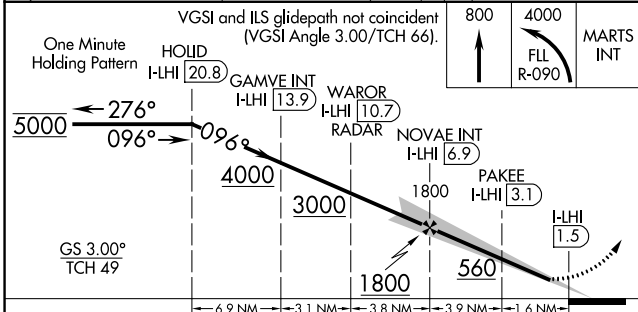
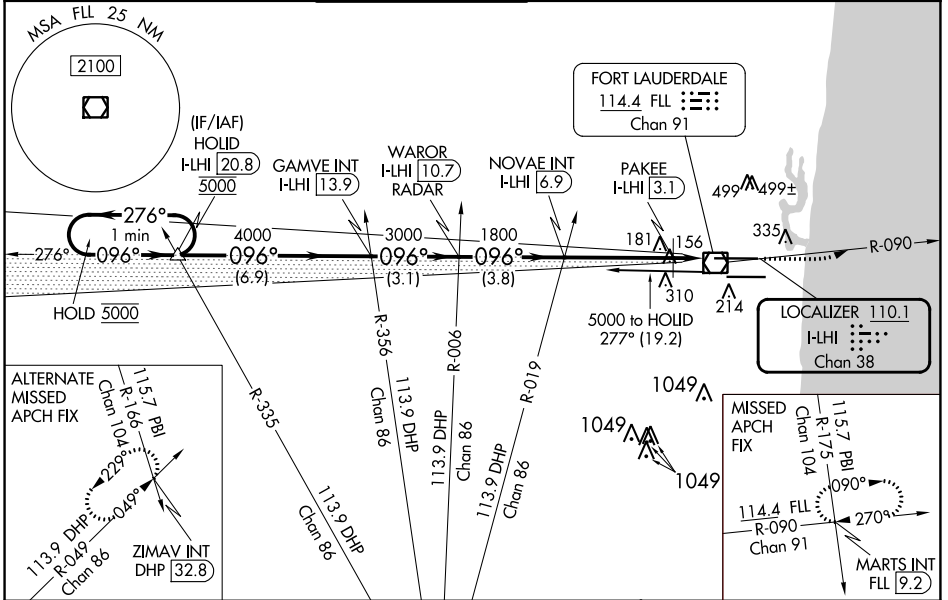


LOC/DME I-LHI <b>110.1</b> Chan <b>38</b>	APP CRS <b>096°</b>	Rwy Idg <b>8424</b> TDZE <b>7</b> Apt Elev <b>65</b>
---	------------------------	--

# ILS or LOC RWY 10L

FORT LAUDERDALE/HOLLYWOOD INTL (FLL)

DME or RADAR required.		MALSRL 	MISSED APPROACH: Climb to 800 then climbing left turn to 4000 on FLL VOR/DME R-090 to MARTS INT/FLL 9.2 DME and hold. Continue climb-in-hold to 4000.					
⚠ Simultaneous approach authorized. For inop ALS, increase S-LOC 10L Cats A, B visibility to RVR 5500. ⚠ PAKEE Fix Minimums: increase S-LOC 10L Cats A/B visibility to RVR 5500, Cats C/D to RVR 6000.			D-ATIS <b>135.0</b>	MIAMI APP CON <b>133.775 285.6</b>	<b>FORT LAUDERDALE TOWER</b> <b>119.3 257.8</b>	GND CON <b>121.4</b>	CLNC DEL <b>128.4</b>	CPDLC



CATEGORY	A	B	C	D
S-ILS 10L	207/24 200 (200-½)			
S-LOC 10L	560/24	553 (500-½)	560/60	553 (500-1¼)
CIRCLING	680-1	615 (700-1)	800-2 735 (800-2)	800-2¼ 735 (800-2¼)
PAKEE FIX MINIMUMS (DME REQUIRED)				
S-LOC 10L	420/24	413 (400-½)	420/40	413 (400-¾)
CIRCLING	680-1	615 (700-1)	800-2 735 (800-2)	800-2¼ 735 (800-2¼)

HIRL Rwy 10L-28R and 10R-28L

FAF to MAP 5.5 NM

Knots	60	90	120	150	180
Min:Sec	5:30	3:40	2:45	2:12	1:50

SE-3, 26 DEC 2024 to 23 JAN 2025

SE-3, 26 DEC 2024 to 23 JAN 2025