

MIAMI APP CON  
128.6 306.975  
FLL D-ATIS  
135.0  
FXE ATIS  
119.85  
HWO ATIS  
135.475  
OPF ATIS  
125.9  
PMP ATIS  
120.55

(KYAKS.KYAKS3) 22307

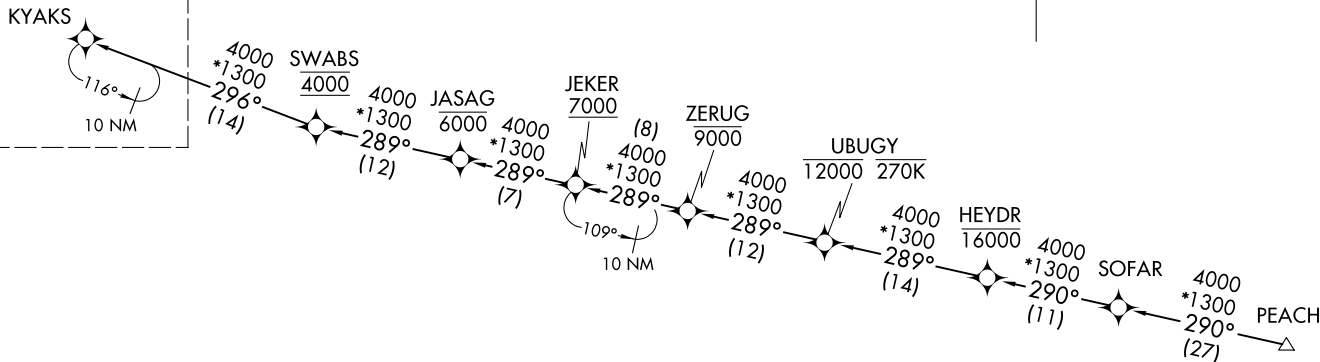
AL-744 (FAA)

FORT LAUDERDALE, FLORIDA



NOTE: Turboprop and prop aircraft only.  
NOTE: Do not file JEKER Transition - to be assigned by ATC.

See following page  
for arrival routes.



RNAV 1-GPS.  
RADAR required.

JEKER TRANSITION (JEKER.KYAKS3)  
PEACH TRANSITION (PEACH.KYAKS3)  
SOFAR TRANSITION (SOFAR.KYAKS3)

(NARRATIVE ON FOLLOWING PAGE)  
(CONTINUED ON FOLLOWING PAGE)

NOTE: Chart not to scale.

(KYAKS.KYAKS3) 03NOV22

KYAKS THREE ARRIVAL (RNAV) Transition Routes

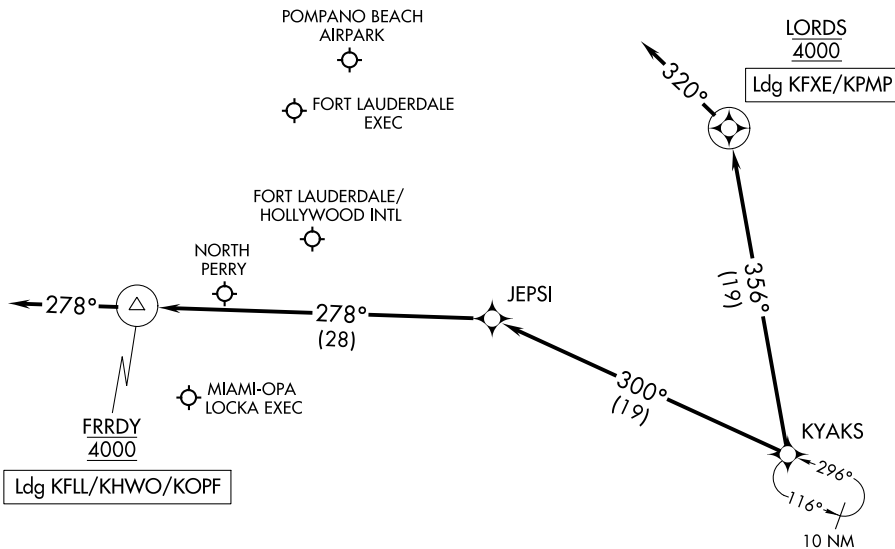
FORT LAUDERDALE, FLORIDA

# KYAKS THREE ARRIVAL (RNAV) Arrival Routes

FORT LAUDERDALE, FLORIDA

RNAV 1-GPS.  
RADAR required.

MIAMI APP CON  
128.6 306.975  
FLL D-ATIS  
135.0  
FXE ATIS  
119.85  
HWO ATIS  
135.475  
OPF ATIS  
125.9  
PMP ATIS  
120.55



Ldg KFL/KHWO/KOPF

Ldg KFXE/KPMP

NOTE: Turboprop and prop aircraft only.

NOTE: Chart not to scale.

## ARRIVAL ROUTE DESCRIPTION

LANDING KFL/KHWO/KOPF: From KYAKS on track 300° to JEPSI, then on track 278° to cross FRRDY at 4000, then on track 278°. Expect RADAR vectors to final approach course.

LANDING KFXE/KPMP: From KYAKS on track 356° to cross LORDS at 4000, then on heading 320°. Expect RADAR vectors to final approach course.