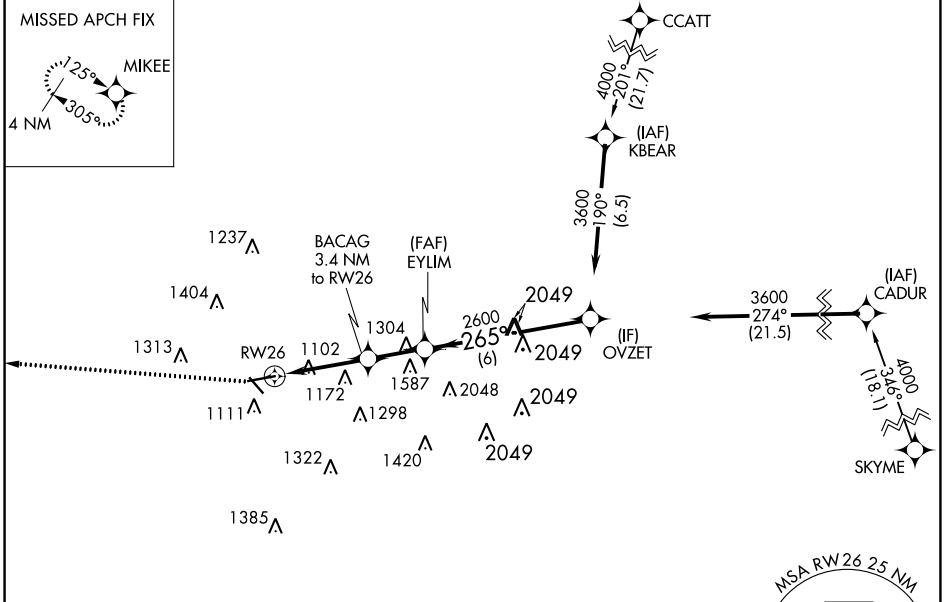


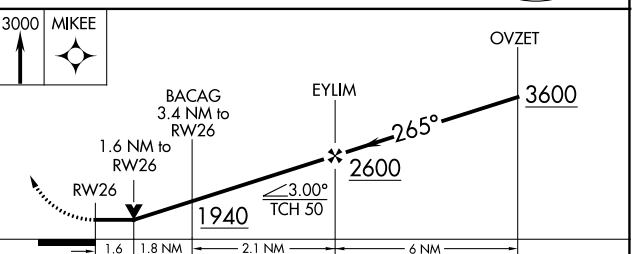
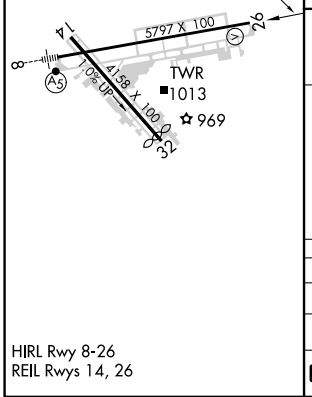
WAAS CH 65930 W26A	APP CRS 265°	Rwy Idg TDZE Apt Elev 5797 814 841
--	------------------------	--

RNAV (GPS) RWY 26
FULTON COUNTY EXEC/CHARLIE BROWN FLD (F'TY)

RNP APCH. ⚠ Circling Rwy 14, 32 NA at night. Rwy 26 helicopter visibility reduction below 3/4 SM NA.		MISSED APPROACH: Climb to 3000 direct MIKEE and hold.	
ATIS 120.175	ATLANTA APP CON 121.0 268.7	FULTON COUNTY TOWER 118.45 257.8	GND CON 121.7 348.6



ELEV 841	D	TDZE 814
----------	----------	----------



CATEGORY	A	B	C	D
LP MDA	1360-1	546 (600-1)	1360-1 5/8	546 (600-1 1/8)
LNAV MDA	1380-1	566 (600-1)	1380-1 5/8	566 (600-1 1/8)
C CIRCLING	1440-1 599 (600-1)	1520-1 679 (700-1)	1740-2 3/4 899 (900-2 3/4)	1740-3 899 (900-3)

SE-4, 26 DEC 2024 to 23 JAN 2025

SE-4, 26 DEC 2024 to 23 JAN 2025