

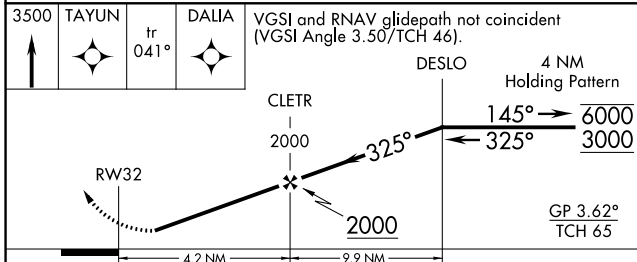
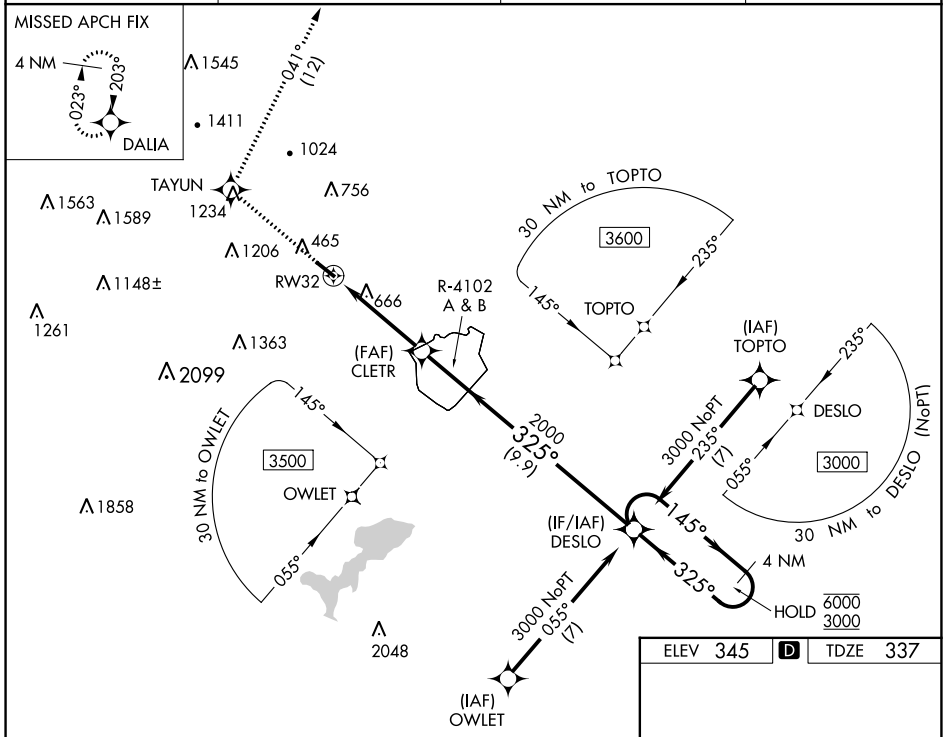
WAAS CH <b>48944</b> <b>W32A</b>	APP CRS <b>325°</b>	Rwy Idg <b>4538</b> TDZE <b>337</b> Apt Elev <b>345</b>
--	------------------------	---

# RNAV (GPS) RWY 32

FITCHBURG MUNI (FIT)

RNP APCH - GPS.		MISSED APPROACH: Climb to 3500 direct TAYUN and on track 041° to DALIA and hold.	
<p>▼ Rwy 32 helicopter visibility reduction below 1 SM NA.                  ▲ Procedure NA when R-4102 A &amp; B are active.                  ❄️ -22°C Circling NA southwest of Rwy 14-32 at night.</p>			

ASOS <b>135.175</b>	BOSTON APP CON <b>124.4 279.6</b>	UNICOM <b>122.7</b> (CTAF)	<b>123.0</b> (I)
------------------------	--------------------------------------	-------------------------------	------------------



CATEGORY	A	B	C	D
LPV DA	773-1¼		436 (500-1¼)	NA
LNVA MDA	960-1	623 (700-1)	960-1¼ 623 (700-1¼)	NA
❑ CIRCLING	1080-1 735 (800-1)	1380-1½ 1035 (1100-1½)	1520-3 1175 (1200-3)	NA

ELEV <b>345</b>	TDZE <b>337</b>
-----------------	-----------------

MIRL Rwy 14-32 (I)  
REIL Rwy 14 and 32 (I)

NE-1, 26 DEC 2024 to 23 JAN 2025

NE-1, 26 DEC 2024 to 23 JAN 2025