

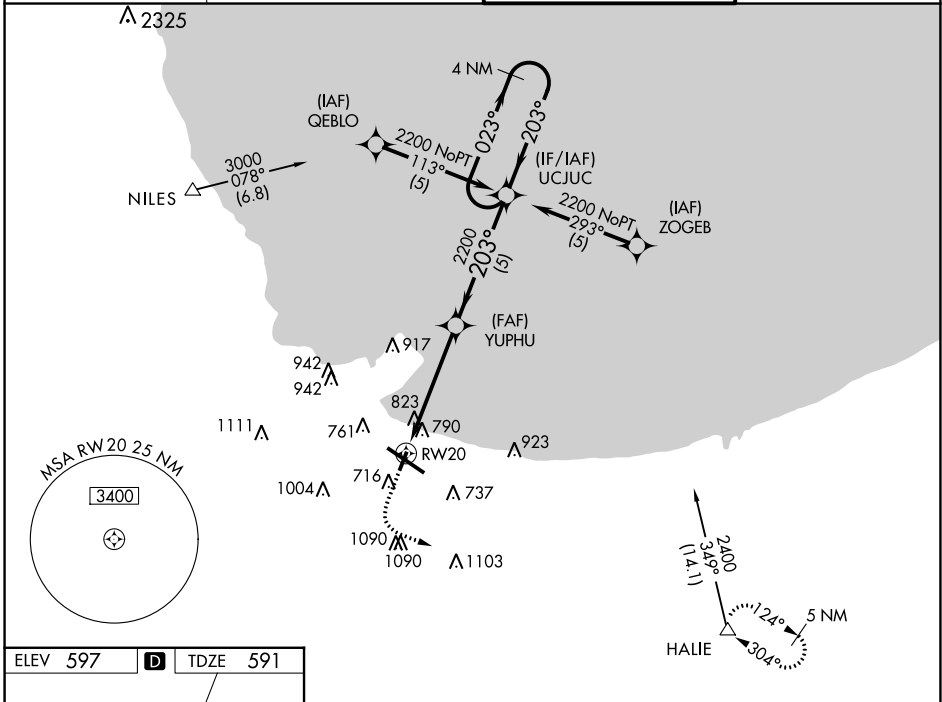
APP CRS 203°	Rwy Idg TDZE Apt Elev	3604 591 597
------------------------	-----------------------------	---

RNAV (GPS) RWY 20

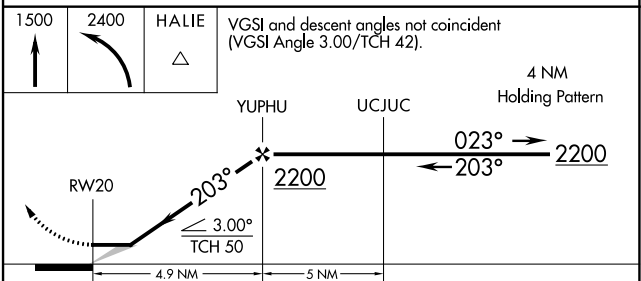
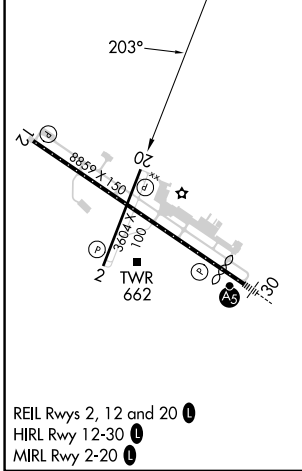
GARY/CHICAGO INTL (GYY)

	GPS or RNP-0.3 required. DME/DME RNP-0.3 NA.	MISSED APPROACH: Climb to 1500 then climbing left turn to 2400 direct HALIE WP and hold.
--	---	--

ATIS 134.575	CHICAGO APP CON 133.1 285.6	GARY TOWER ★ 125.6 (CTAF) 1	GND CON 121.9
------------------------	---------------------------------------	---------------------------------------	-------------------------



ELEV 597	D	TDZE 591
----------	----------	----------



VGSI and descent angles not coincident (VGSI Angle 3.00/TCH 42).	4 NM Holding Pattern			
	YUPHU	UCJUC		
	2200		2200	
	023° →		← 203°	
	4.9 NM		5 NM	
CATEGORY	A	B	C	D
GLS PA DA	NA			
LNAV/VNAV DA	NA			
LNAV MDA	1080-1 489 (500-1)		1080-1¼ 489 (500-1¼)	1080-1½ 489 (500-1½)
CIRCLING	1140-1 543 (600-1)	1180-1 583 (600-1)	1400-2¼ 803 (900-2¼)	1420-2¾ 823 (900-2¾)

EC-2, 26 DEC 2024 to 23 JAN 2025

EC-2, 26 DEC 2024 to 23 JAN 2025