

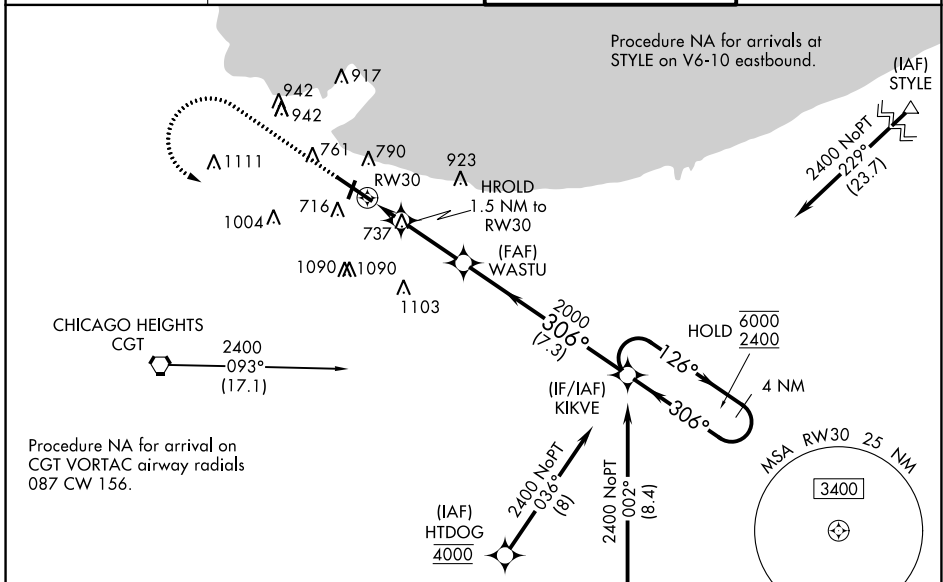
WAAS CH <b>78323</b> <b>W30A</b>	APP CRS <b>306°</b>	Rwy ldg <b>7959</b> TDZE <b>591</b> Apt Elev <b>597</b>
--	------------------------	---

# RNAV (GPS) Y RWY 30

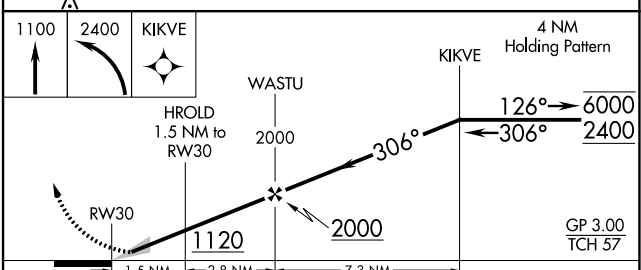
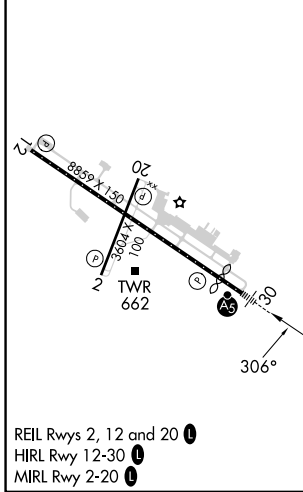
GARY/CHICAGO INTL (GYY)

RNP APCH - GPS.	MALSR	MISSED APPROACH: Climb to 1100 then climbing left turn to 2400 direct KIKVE and hold.
<p>⚠ For uncompensated Baro-VNAV systems, LNAV/VNAV NA below -16°C or above 54°C. For inop ALS, increase LNAV Cat C and D visibility to RVR 6000. ** RVR 1800 authorized with use of FD or AP or HUD to DA (NA when using Chicago Midway Intl altimeter setting).</p>		

ATIS <b>134.575</b>	CHICAGO APP CON <b>133.1 285.6</b>	GARY TOWER ★ <b>125.6 (CTAF)</b>	GND CON <b>121.9</b>
------------------------	---------------------------------------	-------------------------------------	-------------------------



ELEV 597	D	TDZE 591
----------	---	----------



1.5 NM	2.8 NM	7.3 NM		
CATEGORY	A	B	C	D
LPV DA**		791/24	200 (200-1/2)	
LNAV/VNAV DA		991/35	400 (400-5/8)	
LNAV MDA	1000/24	409 (500-1/2)	1000/40	409 (500-3/4)
CIRCLING	1160-1 563 (600-1)	1180-1 583 (600-1)	1400-2 1/4 803 (900-2 1/4)	1420-2 3/4 823 (900-2 3/4)

EC-2, 26 DEC 2024 to 23 JAN 2025

EC-2, 26 DEC 2024 to 23 JAN 2025