

(AHMET4.KKIDS) 22083

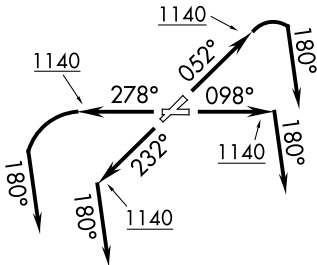
AL-753 (FAA)

LAKE COUNTY EXEC (LNN)
WILLOUGHBY, OHIO

AHMET FOUR DEPARTURE (RNAV)

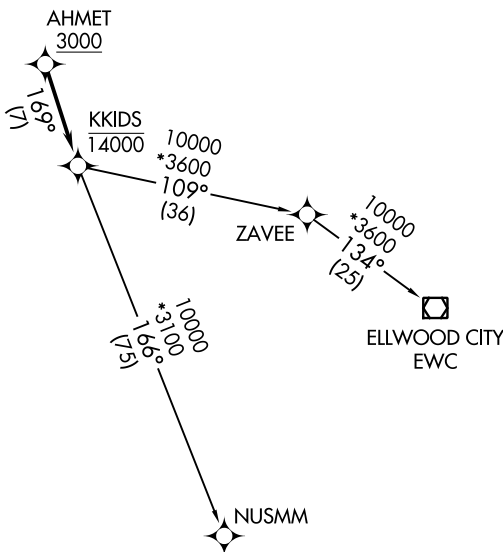
AWOS-3PT 119.225
CTAF 122.725
CLEVELAND DEP CON
125.35 346.325

**TOP ALTITUDE:
ASSIGNED BY ATC**



TAKEOFF MINIMUMS:

Rwys 5, 10, 23, 28: Standard
with minimum climb of 500'
per NM to 1140.



NOTE: RNAV 1.
NOTE: RADAR required.
NOTE: DME/DME/IRU or GPS required.

NOTE: Chart not to scale.

DEPARTURE ROUTE DESCRIPTION

TAKEOFF RUNWAY 5: Climb on heading 052° to 1140, then right turn on heading 180° or as assigned by ATC for RADAR vectors to cross AHMET at or above 3000, thence....

TAKEOFF RUNWAY 10: Climb on heading 098° to 1140, then on heading 180° or as assigned by ATC for RADAR vectors to cross AHMET at or above 3000, thence....

TAKEOFF RUNWAY 23: Climb on heading 232° to 1140, then on heading 180° or as assigned by ATC for RADAR vectors to cross AHMET at or above 3000, thence....

TAKEOFF RUNWAY 28: Climb on heading 278° to 1140, then left turn on heading 180° or as assigned by ATC for RADAR vectors to cross AHMET at or above 3000, thence....

....on track 169° to cross KKIDS at or below 14000, then on (transition).

Maintain altitude assigned by ATC, expect filed altitude ten minutes after departure.

ELLWOOD CITY TRANSITION (AHMET4.EWC)

NUSMM TRANSITION (AHMET4.NUSMM)

AHMET FOUR DEPARTURE (RNAV)

(AHMET4.KKIDS) 26MAR20

WILLOUGHBY, OHIO
LAKE COUNTY EXEC (LNN)

EC-2, 26 DEC 2024 to 23 JAN 2025

EC-2, 26 DEC 2024 to 23 JAN 2025