

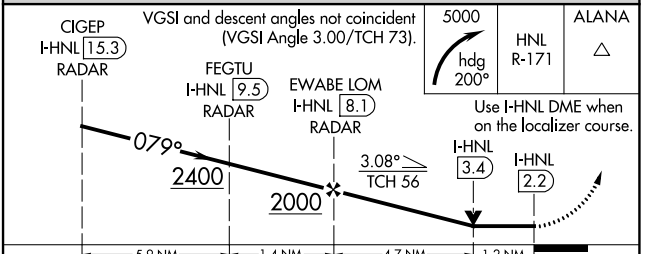
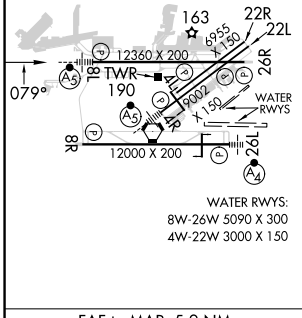
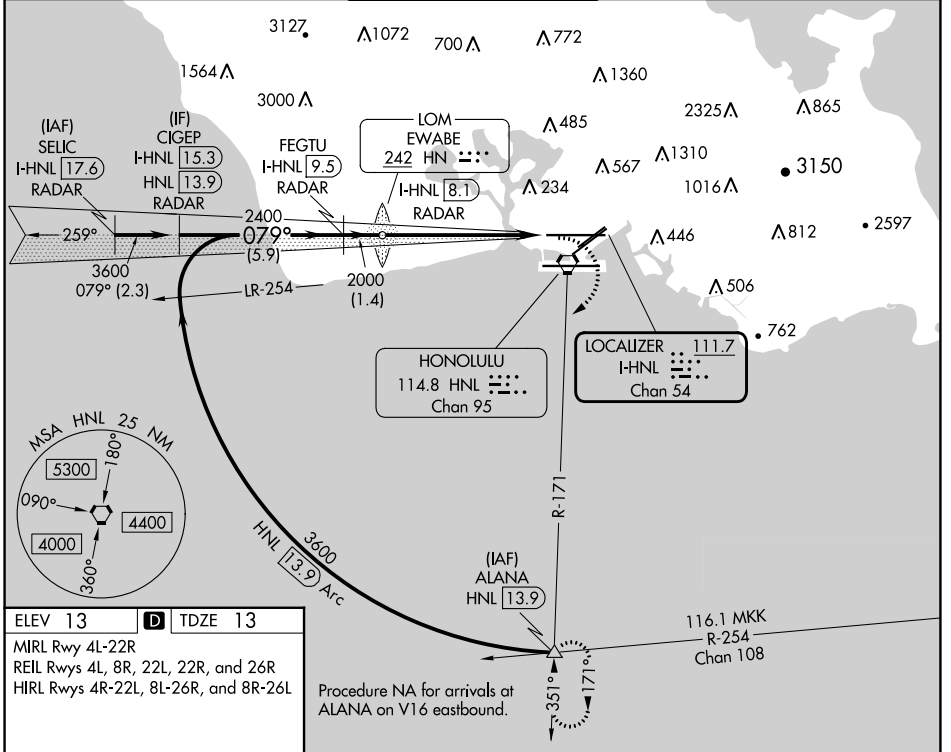
LOC/DME I-HNL <b>111.7</b> Chan 54	APP CRS <b>079°</b>	Rwy Idg <b>12312</b> TDZE <b>13</b> Apt Elev <b>13</b>
--	------------------------	--

# LOC RWY 8L

DANIEL K INOUEY INTL (HNL) (PHNL)

DME or RADAR required.		MALSR 	MISSED APPROACH: Climbing right turn to 5000 on heading 200° and HNL VORTAC R-171 to ALANA INT/HNL 13.9 DME and hold, continue climb-in-hold to 5000.
<p><b>▼</b> Circling Rwy 22R NA at night. Circling NA for Cats A and B northwest of Rwy 8L and 22R and for Cats C and D north of Rwy 8L-26R. Circling NA to sea lanes 4W, 8W, 22W and 26W. For inop ALS, increase S-LOC 8L Cats C and D visibility to 1<math>\frac{3}{8}</math> SM.</p>			

D-ATIS <b>127.9 251.15</b>	HCF APPROACH <b>118.3 269.0</b>	HONOLULU TOWER <b>118.1 257.8</b> <b>123.9 273.575</b> (Rwy 8R/26L)	GND CON <b>121.9 348.6</b>	CLNC DEL <b>121.4 281.4</b>
-------------------------------	------------------------------------	---	-------------------------------	--------------------------------



FAF to MAP 5.9 NM					
Knots	60	90	120	150	180
Min:Sec	5:54	3:56	2:57	2:22	1:58

CATEGORY	A	B	C	D
S-8L	480- $\frac{1}{2}$	467 (500- $\frac{1}{2}$ )	480-1	467 (500-1)
<b>☑</b> CIRCLING	680-1	667 (700-1)	820-2 $\frac{1}{4}$ 807 (900-2 $\frac{1}{4}$ )	1280-3 1267 (1300-3)

PAC, 26 DEC 2024 to 20 FEB 2025

PAC, 26 DEC 2024 to 20 FEB 2025