

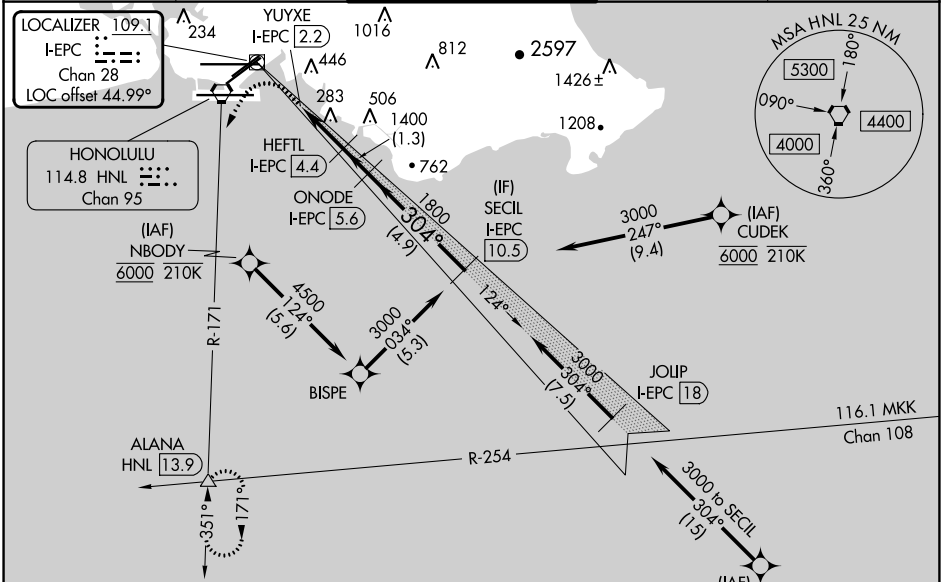
LOC/DME I-EPC 109.1 Chan 28	APP CRS 304°	Rwy Idg TDZE 10 Apt Elev 13
--	------------------------	---

LDA RWY 26L

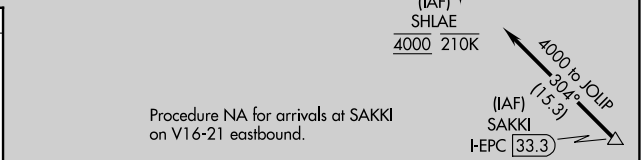
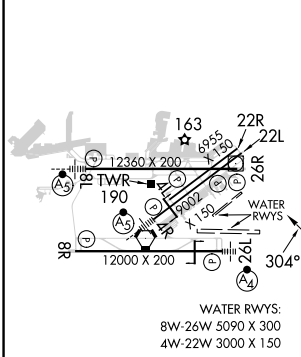
DANIEL K INOUE INTL (HNL) (PHNL)

DME required. From CUDEK, NBODY, SHLAE; RNAV 1-GPS required.		MALSF 	MISSED APPROACH: Climb to 600 then climbing left turn to 3000 on HNL VORTAC R-171 to ALANA INT/HNL 13.9 DME and hold.
	<p>⚠️ Circling Rwy 22R NA at night. Circling NA to sea lanes 4W, 8W, 22W and 26W. NBODY transition, CUDEK transition, SHLAE transition NA for Cat E aircraft. Follow flasher lights to Rwy 26L. Procedure NA when ALS or SFL inop. Circling Cat E NA. Circling NA for Cats A and B northwest of Rwy 8L-22R. Circling NA for Cats C and D north of Rwy 8L-26R.</p>		

D-ATIS 127.9 251.15	HCF APPROACH 118.3 269.0	HONOLULU TOWER 118.1 257.8 123.9 273.575 (Rwy 8R/26L)	GND CON 121.9 348.6	CLNC DEL 121.4 281.4
-------------------------------	------------------------------------	---	-------------------------------	--------------------------------



ELEV 13	D	TDZE 10
---------	----------	---------



CATEGORY	A	B	C	D	E
S-LDA 26L	600-2 590 (600-2)				
C CIRCLING	680-2¼ 667 (700-2¼)	760-2¼ 747 (800-2¼)	820-2¼ 807 (900-2¼)	1400-3 1387 (1400-3)	NA

MIRL Rwy 4L-22R REIL Rwy 4L, 8R, 22L, 22R, and 26R HIRL Rwy 4R-22L, 8L-26R, and 8R-26L	<p>HONOLULU, HAWAII DANIEL K INOUE INTL (HNL) (PHNL)</p> <p>Amdt 6A 25FEB21 21°19'N-157°55'W</p> <h1>LDA RWY 26L</h1>				
--	---	--	--	--	--

PAC, 26 DEC 2024 to 20 FEB 2025

PAC, 26 DEC 2024 to 20 FEB 2025