

(OPACA.OPACA4) 23334
OPACA FOUR ARRIVAL

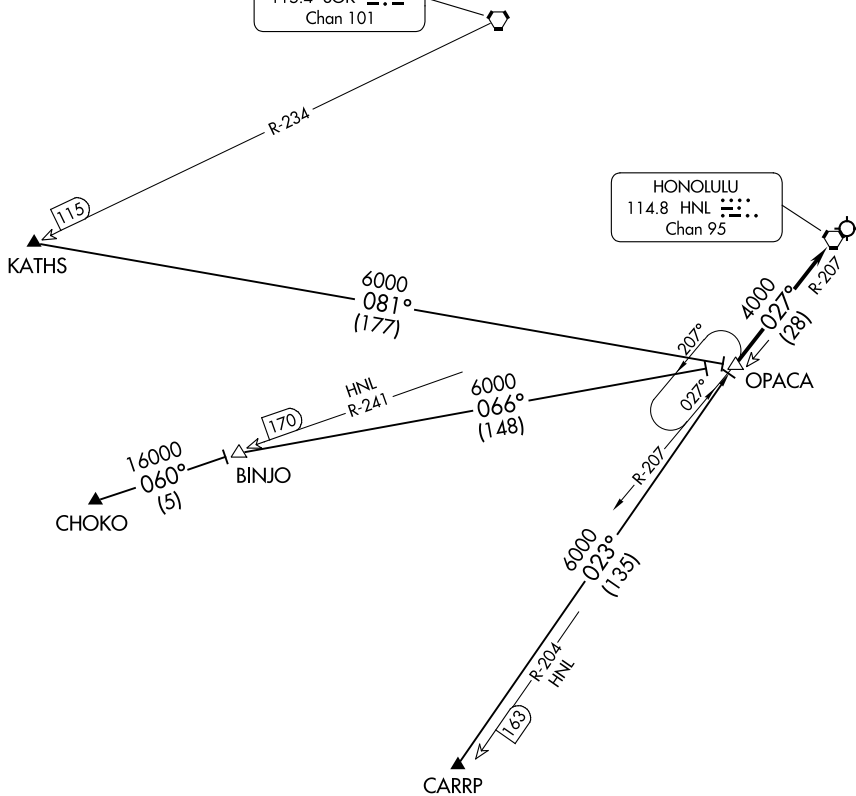
AL-754 (FAA)

DANIEL K INOUYE INTL (HNL) (PHNL)
 HONOLULU, HAWAII

HCF CENTER
 119.9 306.9

SOUTH KAUAI
 115.4 SOK
 Chan 101

HONOLULU
 114.8 HNL
 Chan 95



PAC, 26 DEC 2024 to 20 FEB 2025

PAC, 26 DEC 2024 to 20 FEB 2025

NOTE: RNAV equipped aircraft only.

NOTE: Chart not to scale.

ARRIVAL ROUTE DESCRIPTION

CARRP TRANSITION (CARRP.OPACA4): From over CARRP WP, RNAV direct to OPACA DME. Thence. . .

CHOKO TRANSITION (CHOKO.OPACA4): From over CHOKO WP, RNAV direct to BINJO DME, then direct to OPACA DME. Thence. . .

KATHS TRANSITION (KATHS.OPACA4): From over KATHS WP, RNAV direct to OPACA DME. Thence. . .

. . . From over OPACA DME via HNL R-207 to HNL VORTAC, expect RADAR vectors to final approach course.